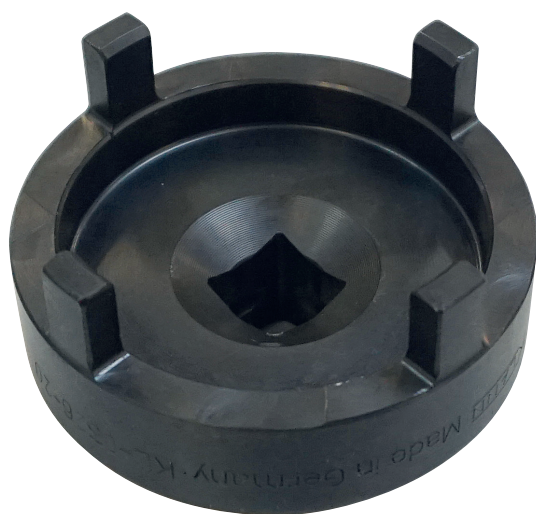


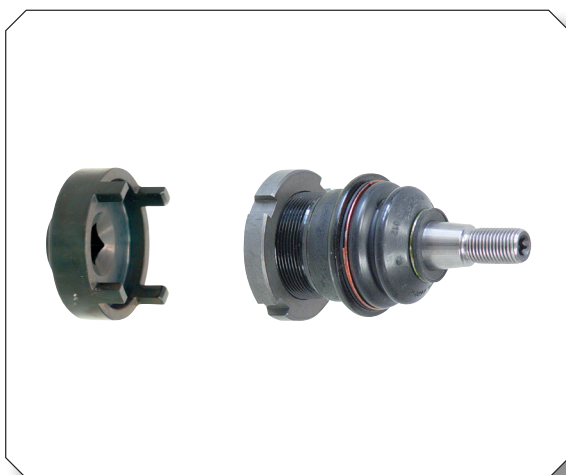


KL-0326-20

Hook Spanner, Mercedes



Product information EN
⚠ Read and understand before use!



www.gedore-automotive.com

GEDORE Automotive GmbH

Breslauer Straße 41
78166 - Donaueschingen
Postfach 1329
78154 Donaueschingen - GERMANY

☎ +49 (0) 771 / 8 32 23-0
☎ +49 (0) 771 / 8 32 23-90
✉ info.gam@gedore.com
🌐 gedore-automotive.com

GEDORE TOOLS, INC.

Only for USA, Canada & Mexico / Sólo para EE.UU., Canadá y México
Seulement pour les USA, le Canada et le Mexique
7187 Bryhawke Circle, Suite 700
North Charleston, SC 29418, USA

☎ +1-843 / 225 50 15
☎ +1-843 / 225 50 20
✉ info@gedoretools.com
🌐 gedore.com

Version 02/2023

0326-20_EN230234.indd

Product description

KL-0326-20 - Hook spanner, Mercedes

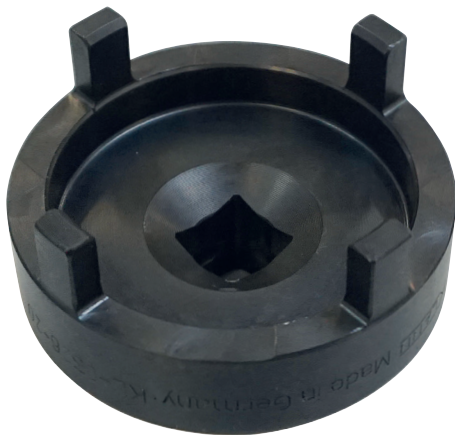
Applicable to Mercedes-Benz ML/M-Class (W163, W164), e.g. on slotted nut A 000 990 55 55 or support joint A 163 350 01 13, A 163 350 00 13, A 163 330 00 35, A 163 330 01 35, A 164 330 09 35, A 164 352 01 27 etc..

Alternative Tool: W 385 589 00 07 00

For professional loosening or tightening of the slotted nut on the lower ball joint of the front and rear axle.

Recommended accessory:

1993 U-20 - Reversible ratchet



Scope of delivery/single parts overview

Pos.	Part no.	Description	Qty.
-	KL-0326-20	Hook spanner, Mercedes	1

Specifications

Outer diameter:..... 63.0mm

Inner diameter: 53.0mm

Pin width:.....7.5mm

Drive:..... □ 1/2"

Weight:.....360g

⚠ Safety instructions and regulations!

- ✔ **Before using** the special tool, read and understand **all** warning and safety instructions and **follow** them for **safe use!**
- ✔ Work on electrical installations may **only** be carried out by appropriately **qualified personnel!**
- ✔ **Always** observe and adhere to **all** safety rules and regulations when working on electrical installations!
- ✔ Use the special tool **as intended**, and **always** carry out maintenance and repair work in compliance with the regulations on occupational safety and accident prevention as well as the vehicle manufacturer's instructions!
- ✔ **Before each use**, check the special tool **carefully** for damage, loose parts, or unauthorised modifications. **Never** use it if you notice any such deficiencies!
- ✔ **Always** wear your personal protective equipment (*such as safety goggles, protective gloves, safety shoes*) during work!