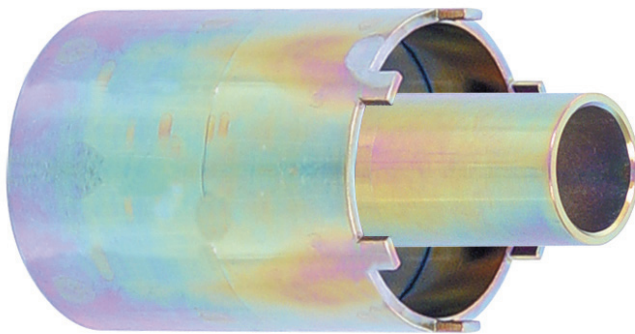
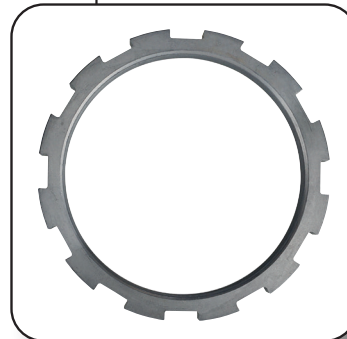
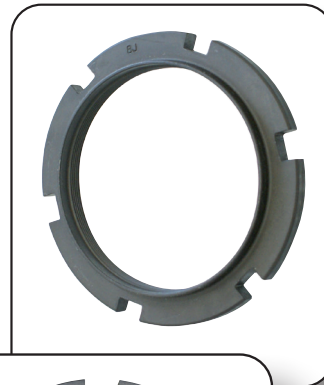




KL-1020-.. Spindle Nut Spanner Series



Product information EN
⚠ Read and understand before use!



www.gedore-automotive.com



GEDORE Automotive GmbH

Breslauer Straße 41
78166 - Donaueschingen
Postfach 1329
78154 Donaueschingen - GERMANY

☎ +49 (0) 771 / 8 32 23-0
☎ +49 (0) 771 / 8 32 23-90
✉ info.gam@gedore.com
🌐 gedore-automotive.com

GEDORE TOOLS, INC.

Only for USA, Canada & Mexico / Sólo para EE.UU., Canadá y México
Seulement pour les USA, le Canada et le Mexique
7187 Bryhawke Circle, Suite 700
North Charleston, SC 29418, USA

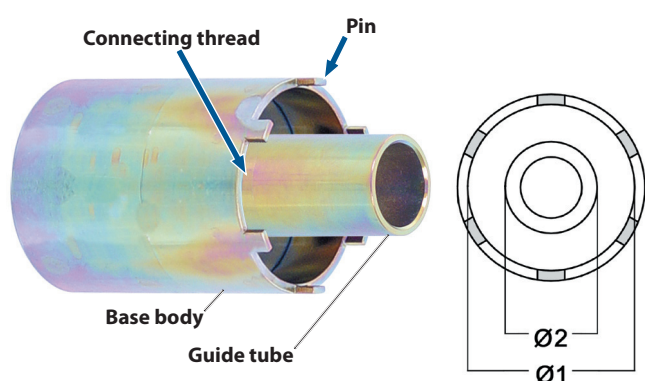
☎ +1-843 / 225 50 15
☎ +1-843 / 225 50 20
✉ info@gedoretools.com
🌐 gedore.com

Version 7 - 05/2021

⚠ Safety instructions and regulations

- **Before using** the tool, read and understand all safety instructions and **follow** them for **safe use**!
- Consider that maintenance and repairs on motor vehicles may only be carried out by trained specialists in specialist automotive workshops, observing occupational safety and accident prevention as well as the vehicle manufacturer's instructions.
- **Before each use**, check the tool **carefully** for damage, loose parts or unauthorised modifications. **Never** use it if you notice any such deficiencies!
- Use the tool **as intended** and **always** observe the vehicle-specific application procedures in the vehicle manufacturer's repair manual!
- **Always** wear your personal protective equipment (for example safety goggles, protective gloves, safety shoes) when working!

📷 1: KL-1020-... - Spindle nut spanner series



Product description

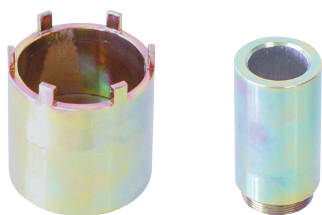
For loosening and tightening locknuts, for example on axles and gearbox or differential flanges.

① **The spindle nut spanner series modular system:**
The individual base bodies and guide tubes of the spindle nut spanners can be combined with each other in any way, depending on the connecting thread.

KL-1020-1.. - Spindle nut spanner series

Connecting thread: M36 x 1.5
Drive: **3/4"**

📷 2: KL-1020-10



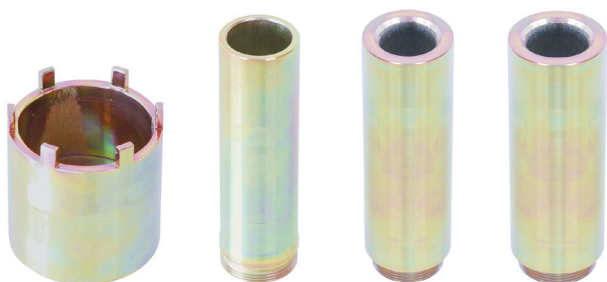
KL-1020-10 - Spindle nut spanner

Fits Mercedes hypoid rear axles, for example: HL0/3, HL0/6, HL0/7, HL1/2 (only 63 mm diam. necessary), HL1/3, HL1/8, HL1/9, HL2/30C

Scope of delivery / specifications: 📷 1+2

Part no.	Designation	Diam. 1	Diam. 2	Length	Pin	
					Number	Width
KL-1020-110	Base body	63mm	-	75mm	6 pcs	7.5mm
KL-1020-1904	Guide tube	-	42mm	80mm		

📷 3: KL-1020-11



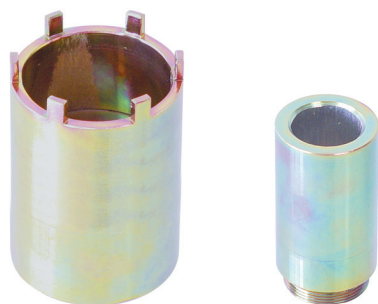
KL-1020-11 - Spindle nut spanner

Fits Mercedes hypoid rear axles, for example: HL2/2, HL2/3, HL2/5, HL2/9, HL2/11, HL2/12, HL2/15.

Scope of delivery / specifications: 📷 1+3

Part no.	Designation	Diam. 1	Diam. 2	Length	Pin	
					Number	Width
KL-1020-110	Base body	63mm	-	75mm	6 pcs	7.5mm
KL-1020-1901	Guide tube	-	36mm	125mm		
KL-1020-1903	Guide tube	-	40.5mm	125mm		
KL-1020-1905	Guide tube	-	43mm	125mm		

📷4: KL-1020-12



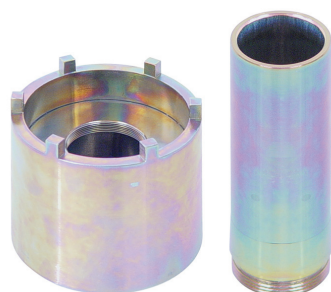
KL-1020-12 - Spindle nut spanner

Fits Mercedes hypoid rear axles, for example: HL2/2, HL2/7, HL2/13.

Scope of delivery / specifications: 📷1+4

Part no.	Designation	Diam. 1	Diam. 2	Length	Pin	
					Number	Width
KL-1020-120	Base body	71.5mm	-	110mm	6 pcs	10.9mm
KL-1020-1904	Guide tube	-	42mm	80mm		

📷5: KL-1020-13



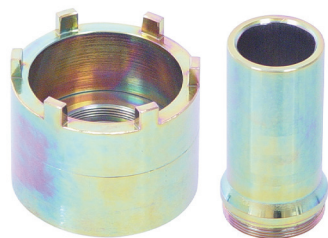
KL-1020-13 - Spindle nut spanner

Fits (driven) MAN front axles M series, for example: 3 ME DI and for outer planetary rear axles: 5 MR, 3 MR.

Scope of delivery / specifications: 📷1+5

Part no.	Designation	Diam. 1	Diam. 2	Length	Pin	
					Number	Width
KL-1020-130	Base body	76.5mm	-	95mm	6 pcs	13mm
KL-1020-1902	Guide tube	-	36.5mm	105mm		

📷6: KL-1020-20



KL-1020-2.. - Spindle nut spanner series

Connecting thread: M48 x 1.5

Drive: **3/4"**

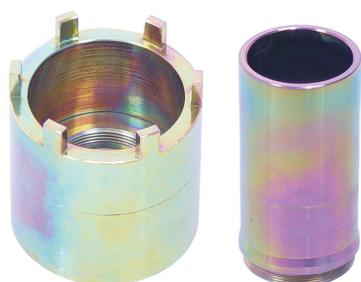
KL-1020-20- Spindle nut spanner

Fits Mercedes palloid front axles, for example: AL3/1, AL3/2, AL3/4, AL3/7, AL3/8.

Scope of delivery / specifications: 📷1+6

Part no.	Designation	Diam. 1	Diam. 2	Length	Pin	
					Number	Width
KL-1020-220	Base body	75mm	-	70mm	6 pcs	9.5mm
KL-1020-2901	Guide tube	-	44mm	95mm		

📷7: KL-1020-21



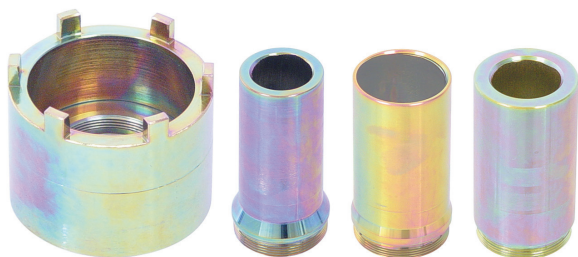
KL-1020-21 - Spindle nut spanner

Fits MAN Hypoid (banjo) rear axles G-series, for example: VW2, VW4, VW6.1 - 6.8.

Scope of delivery / specifications: 📷1+7

Part no.	Designation	Diam. 1	Diam. 2	Length	Pin	
					Number	Width
KL-1020-210	Base body	77mm	-	70mm	6 pcs	10mm
KL-1020-2904	Guide tube	-	49mm	100mm		

📷 8: KL-1020-22



KL-1020-22 - Spindle nut spanner

Fits Mercedes hypoid rear axles, for example: HL2/14, KL2/16, KL4/1, HL4/16, HL4/17, HL4/23, HL4/28, HL4/29, HL4/30, HL4/4, HL4/8, HD4/6G, HO4/2, HO4/18, NR4/4.

Scope of delivery / specifications: 📷 1+8

Part no.	Designation	Diam. 1	Diam. 2	Length	Pin	
					Number	Width
KL-1020-220	Base body	75mm	-	70mm	6 pcs	9.5mm
KL-1020-2902	Guide tube	-	43mm	95mm		
KL-1020-2903	Guide tube	-	48mm	95mm		
KL-1020-2906	Guide tube	-	51mm	95mm		

📷 9: KL-1020-230 A



KL-1020-230 A - Spindle nut spanner

Fits Mercedes commercial vehicles with locknut A9423560026 / A9423560126. For example, installed on Actros, Arocs, Atego, Axor outer planetary axles with drum brake; on outer planetary rear axles (European axles) 10 t + 13 t: HL7/1, HL7/2, HL7/18, HO7/8, HO7/9, HL7/0, HL7/015, HL7/021, HL7/3, HD7/2, HD7/19DG, HD7/016DG; 7 t outer planetary front axles: AL7/1 and trailing axles NR7/4.

Alternative tools: W305589010700

Specifications: 📷 1+9

Part no.	Designation	Diam. 1	Diam. 2	Length	Pin	
					Number	Width
KL-1020-230 A	Base body	102mm	-	140mm	12 pcs	11.4mm

ⓘ No connection thread for guide tube (modular system)!

📷 10: KL-1020-24



KL-1020-24 - Spindle nut spanner

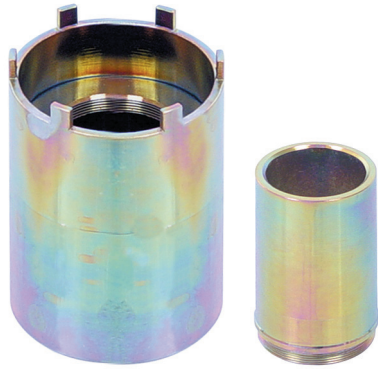
Fits Mercedes vehicles with groove nut A9703530026, for example ATEGO pinion axles: HL2/43, 741.980, 742.503/504/505/506/509, 744.8, 745.8, 742.550.

Alternative tools: W742589010700

Scope of delivery / specifications: 📷 1+10

Part no.	Designation	Diam. 1	Diam. 2	Length	Pin	
					Number	Width
KL-1020-240	Base body	87mm	-	65mm	6 pcs	10mm
KL-1020-2908	Guide tube	-	49mm	150mm		
KL-1020-2909	Guide tube	-	57mm	140mm		

📷 11: KL-1020-31



KL-1020-3.. - Spindle nut spanner series

Connecting thread: M56 x 1.5

Drive: 

KL-1020-31- Spindle nut spanner

Fits Mercedes hypoid axles, for example: HO4/10, HO4/10DL, HO4/11DL, HO5/3, HO5/4, HO5/8, HD4/21G, HD4/2G, HD4/22, HD5/3, HL5/2, HL5/6. Without guide tube suitable e.g. for Mercedes rear axles HL 2/43 DG - 6.2 (Atego).

Scope of delivery / specifications: 📷 1+11

Part no.	Designation	Diam. 1	Diam. 2	Length	Pin	
					Number	Width
KL-1020-310	Base body	88mm	-	140mm	6 pcs	9.7mm
KL-1020-3904	Guide tube	-	57mm	80mm		

📷 12: KL-1020-32



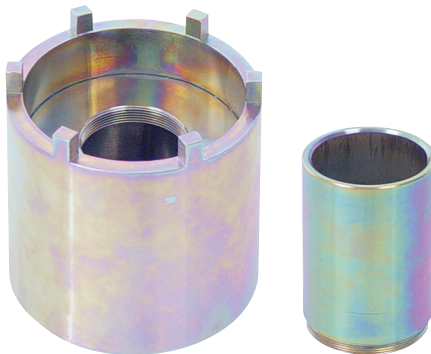
KL-1020-32 - Spindle nut spanner

Fits MAN hypoid rear axles M-series, for example: 16M (Soma axis), HY-0955, HY-1175, HY-0855.

Scope of delivery / specifications: 📷 1+12

Part no.	Designation	Diam. 1	Diam. 2	Length	Pin	
					Number	Width
KL-1020-320	Base body	92mm	-	85mm	4 pcs	7.8mm
KL-1020-3905	Guide tube	-	58mm	110mm		

📷 13: KL-1020-33



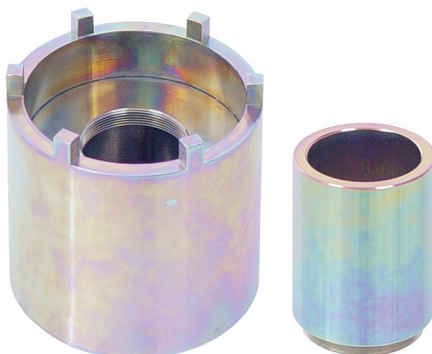
KL-1020-33 - Spindle nut spanner

Fits Mercedes hypoid axles, for example: HO 5/5.

Scope of delivery / specifications: 📷 1+13

Part no.	Designation	Diam. 1	Diam. 2	Length	Pin	
					Number	Width
KL-1020-330	Base body	100mm	-	115mm	6 pcs	9.8mm
KL-1020-3906	Guide tube	-	59mm	115mm		

📷 14: KL-1020-35



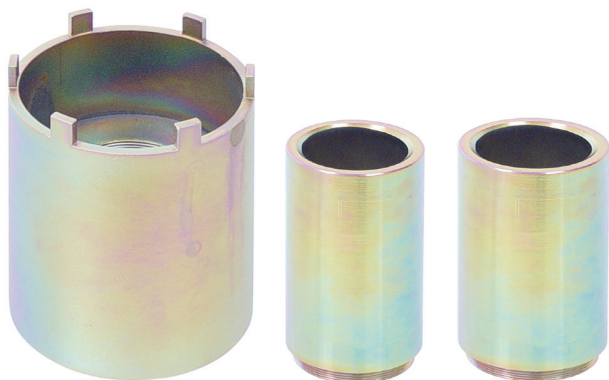
KL-1020-35 - Spindle nut spanner

Fits Mercedes palloid front axles, for example: AL3/6, AL3/9, MP3.

Scope of delivery / specifications: 📷 1+14

Part no.	Designation	Diam. 1	Diam. 2	Length	Pin	
					Number	Width
KL-1020-330	Base body	100mm	-	115mm	6 pcs	9.8mm
KL-1020-3909	Guide tube	-	64mm	105mm		

📷 15: KL-1020-36



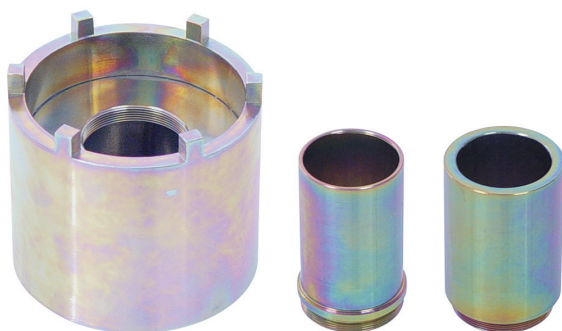
KL-1020-36 - Spindle nut spanner

Fits MAN outer planetary rear axles F-series (H7, HD7) and front axles F-series (VA) hypoid rear axles F-series (HY-1175, HDY-1175, HY-13110, HY-1180).

Scope of delivery / specifications: 📷 1+15

Part no.	Designation	Diam. 1	Diam. 2	Length	Pin	
					Number	Width
KL-1020-360	Base body	102mm	-	140mm	6 pcs	11.4mm
KL-1020-3901	Guide tube	-	51.5mm	135mm		
KL-1020-3910	Guide tube	-	66.5mm	135mm		

📷 16: KL-1020-37



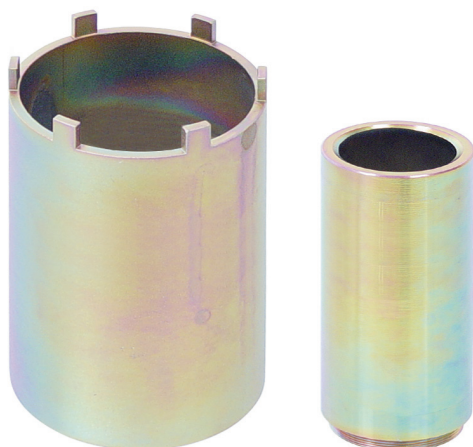
KL-1020-37 - Spindle nut spanner

Fits for Mercedes rear axle 749.0; trailing rocker arm axle NS4/2, NS4/10; pinion axles HL6/1, HL6/2, HL6/3, HD6/3 and on Actros MP4.

Scope of delivery / specifications: 📷 1+16

Part no.	Designation	Diam. 1	Diam. 2	Length	Pin	
					Number	Width
KL-1020-370 A	Base body	113mm	-	120mm	6 pcs	9.8mm
KL-1020-3902	Guide tube	-	55mm	95mm		
KL-1020-3908	Guide tube	-	63mm	95mm		

📷 17: KL-1020-38



KL-1020-38 - Spindle nut spanner

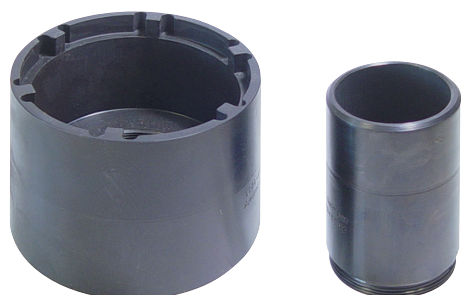
Suitable for Mercedes vehicles with locknut A 946 356 02 26, for example ACTROS rear axles HL/ HL8.

Scope of delivery / specifications: 📷 1+17

Part no.	Designation	Diam. 1	Diam. 2	Length	Pin	
					Number	Width
KL-1020-380	Base body	117mm	-	180mm	6 pcs	9.8mm
KL-1020-3911	Guide tube	-	60mm	195mm		

KL-1020-4.. - Spindle nut spanner series

📷 18: KL-1020-40



KL-1020-40 - Spindle nut spanner

Fits Mercedes and MAN, for example, and Mercedes Atego, Transporter and bus with groove nut (A 976 356 00 26). Without guide tube suitable e.g. for MAN bus (type A, J, P, R) and truck (type H, L, M, N and 1) with groove nut (81.90620-0086).

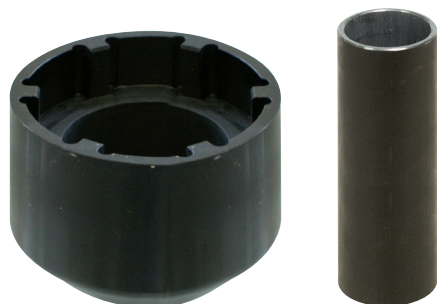
Scope of delivery / specifications: 📷 1+18

Part no.	Designation	Diam. 1	Diam. 2	Length	Pin	
					Number	Width
KL-1020-400	Base body	91mm	-	98mm	6 pcs	7.5mm
KL-1020-3905	Guide tube	-	58mm	110mm		

Connecting thread: M56 x 1.5

Drive:

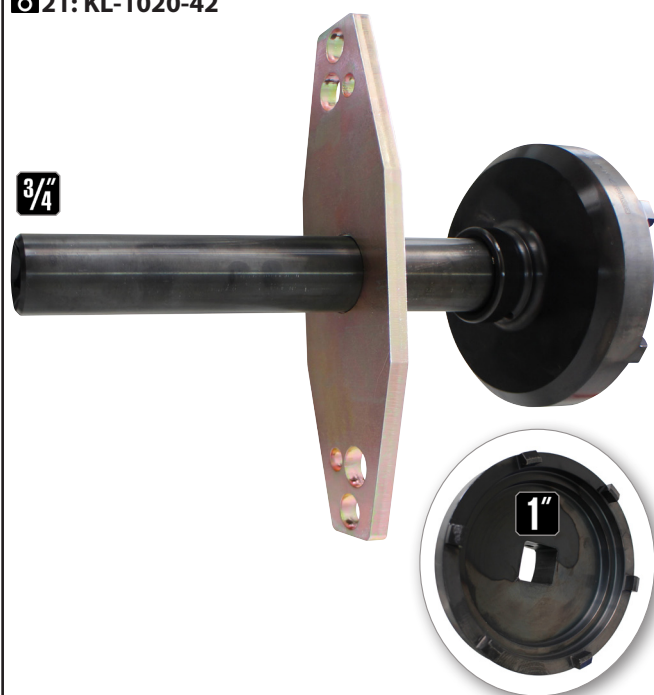
📷 19: KL-1020-41 A



📷 20: KL-1020-401



📷 21: KL-1020-42



Overview of the single parts:



KL-1020-41 A - Spindle nut spanner

Suitable for MAN vehicles with groove nut 81.90620-0092., for example TGA rear axle HY 1350.

Alternative tools: 80.99603-6008

Scope of delivery / specifications: 📷 1+19

Part no.	Designation	Diam. 1	Diam. 2	Length	Pin	
					Number	Width
KL-1020-410 A	Base body	117mm	-	111mm	6 pcs	11.6mm
KL-1020-3913	Guide tube	-	66.5mm	175mm		

Connecting thread: M56 x 1.5

Drive: $\frac{3}{4}$ "

EN

KL-1020-401 - Spindle nut spanner

Suitable for Scania truck gearboxes.

Specifications: 📷 1+20

Part no.	Designation	Diam. 1	Diam. 2	Length	Pin	
					Number	Width
KL-1020-401	Base body	72mm	-	110mm	4 pcs	7mm

ⓘ No connection thread for guide tube (modular system)!

Drive: $\frac{3}{4}$ "

KL-1020-42 - Spindle nut spanner

Suitable for ZF axles (125 mm dia. / 139 mm dia.), for example Mercedes vehicles with the locknut A0009903260.

Alternative tools: 5870401146, W400589010700

Scope of delivery / specifications: 📷 1+21

Item	Part no.	Description	Qty
1	KL-1020-4202	Extension, 38 dia., 3/4"-1"	1
2	KB 2175 (code 6657700)	Locking pin	1
3	KB 2170 (code 6657620)	Circlip	1
4	KL-1020-4203	Guide plate	1
5	KL-1020-4201	Turning part with pins (base body)	1

Part no.	Designation	Diam. 1	Diam. 2	Length	Pin	
					Number	Width
KL-1020-4201	Base body	122.5mm	-	60mm	6 pcs	10.5mm

ⓘ No connection thread for guide tube (modular system)!

Drive: $\frac{3}{4}$ " or 1"

GEDORE-Werkzeugfabrik GmbH & Co. KG

Remscheider Straße 149
42899 - Remscheid
Postfach 120361
47873 Remscheid
GERMANY

Vertrieb DEUTSCHLAND

☎ +49 (0) 2191 / 596-0
☎ +49 (0) 2191 / 596-230
✉ info@gedore.com
🌐 www.gedore.com

Sales INTERNATIONAL

☎ +49 (0) 2191 / 596-910
☎ +49 (0) 2191 / 596-911
✉ info@gedore.com
🌐 www.gedore.com

GEDORE TOOLS, INC.

Only for USA, Canada & Mexico
Sólo para EE.UU., Canadá y México
Seulement pour les USA, le Canada et le Mexique
7187 Bryhawke Circle, Suite 700, North Charleston, SC 29418, USA

☎ +1-843 / 225 50 15
☎ +1-843 / 225 50 20
✉ info@gedoretools.com
🌐 www.gedoretools.com

Worldwide GEDORE service centers and offices are listed on the Internet at: www.gedore.com

GEDORE Automotive GmbH

Breslauer Straße 41
78166 - Donaueschingen
Postfach 1329
78154 Donaueschingen
GERMANY

Vertrieb DEUTSCHLAND

☎ +49 (0) 771 / 8 32 23-0
☎ +49 (0) 771 / 8 32 23-90
✉ info.gam@gedore.com
🌐 gedore-automotive.com



www.gedore-automotive.com