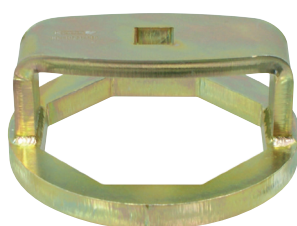




KL-1023-..Series

Sockets for Axle Repairs, HGV



Product information EN
⚠ Read and understand before use!

www.gedore-automotive.com



GEDORE Automotive GmbH

Breslauer Straße 41
78166 - Donaueschingen
Postfach 1329
78154 Donaueschingen - GERMANY

☎ +49 (0) 771 / 8 32 23-0
☎ +49 (0) 771 / 8 32 23-90
✉ info.gam@gedore.com
🌐 gedore-automotive.com

GEDORE TOOLS, INC.

Only for USA, Canada & Mexico / Sólo para EE.UU., Canadá y México
Seulement pour les USA, le Canada et le Mexique
7187 Bryhawke Circle, Suite 700
North Charleston, SC 29418, USA

☎ +1-843 / 225 50 15
☎ +1-843 / 225 50 20
✉ info@gedoretools.com
🌐 gedore.com

Version 04/2022

1: KL-1023-4065



Product description

This tool allows for the easy and professional loosening and tightening of hub caps and axle nuts.

KL-1023-.. series

KL-1023-4065 - Axle Nut Socket, 65mm waf, bi-hex

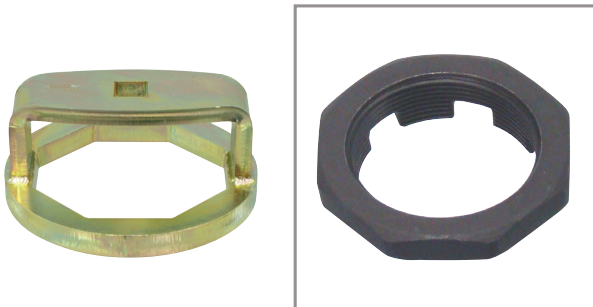
Applicable to IVECO HGVs/commercial vehicles with 7180039 lock nuts.

Size (waf):65mm
 Profile: bi-hex
 Drive:1"
 Height:75mm
 Weight: 1.8kg

Recommended Accessory:

8581-01 - Torque wrench, 600-1500Nm

2: KL-1023-080



KL-1023-080 - Hub Cap and Axle Nut Socket, 80mm waf, octagonal

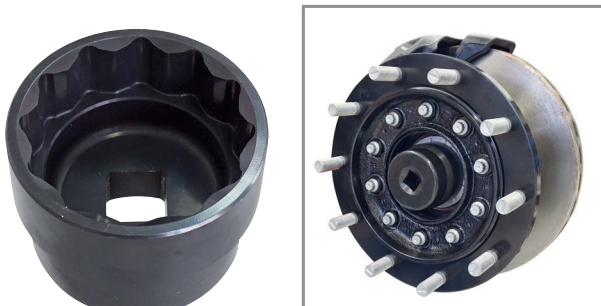
Applicable to Scania 4-Series HGVs/trucks (models from 1996 onwards/from 16t onwards); e.g., to AM front axles (AM 740, AMA 740, AM 740D, AMA 740D).

Size (waf):80mm
 Profile: octagonal
 Drive: 3/4"
 Weight: 1.4 kg

Recommended Accessory:

KL-4007-411 - Swivel head breaker bar, 980mm,
8571-01 - Torque wrench, 520-1000Nm

3: KL-1023-4080



KL-1023-4080 - Axle Nut Socket, 80mm waf, bi-hex

Applicable to DAF, Mercedes, Renault and Volvo HGVs/ commercial vehicles.
 For example, Mercedes vehicles with A 975 332 00 72 lock nuts.

Alternative tool: 999-6970

Size (waf):80mm
 Profile: bi-hex
 Drive:1"
 Height:75mm
 Weight:2.3kg

Recommended Accessory:

8581-01 - Torque wrench, 600-1500Nm

📷4: KL-1023-4085



KL-1023-4085 - Axle Nut Socket, 85mm waf, bi-hex

Applicable to IVECO HGVs/commercial vehicles.

Alternative tools: 99357071, 99357076

Size (waf):.....85mm
Profile:.....bi-hex
Drive:.....1"
Height:.....75mm
Weight:.....2.4 kg

Recommended Accessory:

8581-01 -Torque wrench, 600-1500Nm

📷4: KL-1023-2085



KL-1023-2085 - Hub Cap and Axle Nut Socket, Size (waf) 85mm, hexagonal

Applicable to SAF Holland axle systems.

Size (waf):.....85mm
Profile:.....hexagonal
Drive:.....SW 36

📷5: KL-1023-4090



KL-1023-4090 - Axle Nut Socket, 90mm waf, bi-hex

Applicable to IVECO HGVs/commercial vehicles.

Alternative tool: 99355177

Size (waf):.....90mm
Profile:.....bi-hex
Drive:.....1"
Height:.....75mm
Weight:3.3kg

Recommended Accessory:

8581-01 - Torque wrench, 600-1500Nm

📷6: KL-1023-4095



KL-1023-4095 - Axle Nut Socket, 95mm waf, bi-hex

Applicable to IVECO, Renault and Volvo HGVs/commercial vehicles as well as to Kögel axle systems.

Alternative tools: 99355182, 999-6735

Size (waf):.....95mm
Profile:.....bi-hex
Drive:.....1"
Height:75mm
Weight:2.8kg

Recommended Accessory:

8581-01 - Torque wrench, 600-1500Nm

EN

7: KL-1023-2095



KL-1023-2095 - Hub Cap and Axle Nut Socket, 95mm waf, octagonal

Applicable to BPW axle systems, e.g. as found on BPW EH.. (6.5-9t); EH.. (6t); EH.. (8-9t); ZR.. (8-9t); H.. (6.5-9t) Konv. / ECO; K.. (8-9t) Konv. / ECO; N.. (6-9t) Konv. / ECO; K.. (6.5t) Konv. / ALU hub; H.. (6-9t) oil lub.

Size (waf):.....95mm
 Profile:..... octagonal
 Drive:..... 3/4"
 Weight: 2.27 kg

Recommended Accessory:

KL-4007-411 - Swivel head breaker bar, 980mm,
8571-01 - Torque wrench, 520-1000Nm

8: KL-1023-9095



KL-1023-9095 - Axle Nut Socket, Size 95mm waf, special profile with rounded-corner hexagon

Applicable to Mercedes-Benz axle nuts with 95mm waf size and a special profile with rounded-corner hexagon. For example, found on Mercedes-Benz Discos Trailer axles (MP1 - MP4) with hub c/w bearings etc.

Size (waf):.....95mm
 Special profile: rounded-corner hexagon
 Drive:..... 3/4"

Recommended Accessory:

KL-4007-411 - Swivel head breaker bar, 980mm,
8571-01 - Torque Wrench, 520-1000Nm

9: KL-1023-100



KL-1023-100 - Hub Cap and Axle Nut Socket, 100mm waf, octagonal

Applicable to Scania 4-Series trucks (models from 1996 onwards/from 16t onwards), e.g., to AD/ADA (1100, 1300) rear axles.

Size (waf):..... 100mm
 Profile:..... octagonal
 Drive:..... 3/4"
 Weight:2.6 kg

Recommended Accessory:

KL-4007-411 - Swivel head breaker bar, 980mm,
8571-01 - Torque Wrench, 520-1000Nm

EN

10: KL-1023-2105



KL-1023-2105 - Hub Cap and Axle Nut Socket, Size (waf) 105mm, hexagonal

Applicable to Volvo and Renault trucks (models from 2000 onwards), rear axle.

Size (waf):..... 105mm
 Profile:.....hexagonal
 Length:..... 350mm
 Drive:..... 3/4"

7: KL-1023-4105



KL-1023-4105 - Axle Nut Socket, 105mm waf, bi-hex

Applicable to DAF, IVECO, Renault and Volvo HGVs/commercial vehicles.

For example, suitable for vehicles with 7184036 lock nuts (IVECO) or with 1076335 lock nuts (VOLVO).

Alternative tools: 1329466, 99355180, 999-8457

Size (waf):..... 105mm
 Profile:.....bi-hex
 Drive:.....1"
 Height:.....75mm
 Weight:.....3.0kg

Recommended Accessory:
8581-01 - Torque wrench, 600-1500Nm

8: KL-1023-2109



KL-1023-2109 - Hub Cap and Axle Nut Socket, Size (waf) 109mm, octagonal

Applicable to BPW and Gigant axle systems, e.g., to BPW rear axles: BPW-12T, H.. (10-12t) oil lub.; N.. (10-12t) oil lub.; EH.. (6.5-9t); EH.. (10-12t); H.. (6.5-9t) ECO; K.. (8-9t) ECOM; N.. (6-9t) ECO, as well as to Gigant rear axles and trailer axles: GVH5/6 09010 4218 + DH5/6 09010 4345 (9t); GVH5 10010 3020, 10010 3620, 12010 3020 (10-12t).

Size:..... 109mm waf
 Profil:..... octagonal
 Drive:..... 41mm waf
 Weight:.....2.9kg

📷9: KL-1023-4115



KL-1023-4115 - Axle Nut Socket, 115mm waf, bi-hex

Applicable to IVECO HGVs/commercial vehicles.

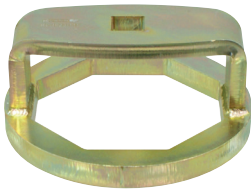
Alternative tools: 99355167

Size (waf):..... 115mm
 Profile:..... bi-hex
 Drive:..... 1"
 Height:..... 75mm
 Weight:..... 3.7kg

Recommended Accessory:

8581-01 - Torque Wrench, 600-1500Nm

📷10: KL-1023-115



KL-1023-115 - Hub Cap and Axle Nut Socket, 115mm waf, octagonal

Applicable to Volvo FH 12 and FH 16 (models from 1993 onwards/16t onwards), as well as Renault Premium DXI, front axle.

Alternative tools: 999-6773

Size (waf):..... 115mm
 Profile:..... octagonal
 Drive:..... 3/4"
 Weight:..... 2.64 kg

Recommended Accessory:

KL-4007-411 - Swivel head breaker bar, 980mm

8571-01 - Torque Wrench, 520-1000Nm

📷10: KL-1023-2120



KL-1023-2120 - Hub Cap and Axle Nut Socket, Size (waf) 120mm, octagonal

Applicable to BPW axle systems, e.g., to BPW-16T rear axles/trailer axles, EH..(13-16t); H.. (14-18t); K.. (13t); N.. (13t); Z.. (13t)..

Size (waf):..... 120mm
 Profile:..... octagonal
 Drive:..... 41mm waf
 Weight:..... 2.3kg

⚠️ Safety instructions and regulations

- ✔ **Before using** the tool, read and understand all safety instructions and **follow** them for **safe use!**
- ✔ Consider that maintenance and repairs on motor vehicles may only be carried out by trained specialists in specialist automotive workshops, observing occupational safety and accident prevention as well as the vehicle manufacturer's instructions.
- ✔ **Before each use**, check the tool **carefully** for damage, loose parts or unauthorised modifications. **Never** use it if you notice any such deficiencies!
- ✔ Use the tool **as intended** and **always** observe the vehicle-specific application procedures in the vehicle manufacturer's repair manual!
- ✔ **Always** wear your personal protective equipment (for example safety goggles, protective gloves, safety shoes) when working!

GEDORE-Werkzeugfabrik GmbH & Co. KG

Remscheider Straße 149
42899 - Remscheid
Postfach 120361
47873 Remscheid
GERMANY

Vertrieb DEUTSCHLAND

☎ +49 (0) 2191 / 596-0
☎ +49 (0) 2191 / 596-230
✉ info@gedore.com
🌐 www.gedore.com

Sales INTERNATIONAL

☎ +49 (0) 2191 / 596-910
☎ +49 (0) 2191 / 596-911
✉ info@gedore.com
🌐 www.gedore.com

GEDORE TOOLS, INC.

Only for USA, Canada & Mexico
Sólo para EE.UU., Canadá y México
Seulement pour les USA, le Canada et le Mexique
7187 Bryhawke Circle, Suite 700, North Charleston, SC 29418, USA

☎ +1-843 / 225 50 15
☎ +1-843 / 225 50 20
✉ info@gedoretools.com
🌐 www.gedoretools.com

Worldwide GEDORE service centers and offices are listed on the Internet at: www.gedore.com

GEDORE Automotive GmbH

Breslauer Straße 41
78166 - Donaueschingen
Postfach 1329
78154 Donaueschingen
GERMANY

Vertrieb DEUTSCHLAND

☎ +49 (0) 771 / 8 32 23-0
☎ +49 (0) 771 / 8 32 23-90
✉ info.gam@gedore.com
🌐 gedore-automotive.com



www.gedore-automotive.com