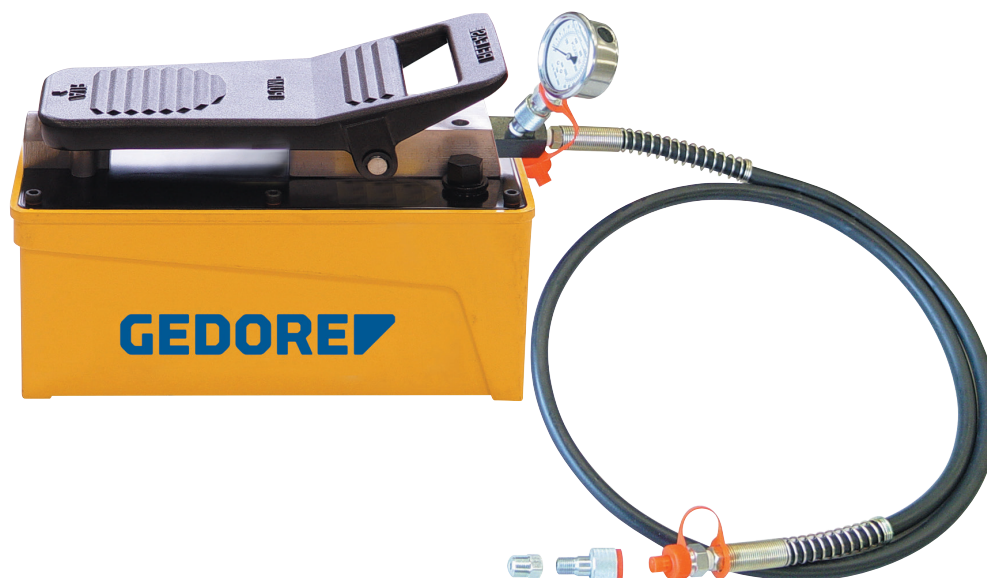




KL-0215-36... Pneumatic Hydraulic Pump

Operating instructions EN
⚠ Read and understand before use!



www.gedore-automotive.com

GEDORE Automotive GmbH

Breslauer Straße 41
78166 - Donaueschingen
Postfach 1329
78154 Donaueschingen - GERMANY

☎ +49 (0) 771 / 8 32 23-0
☎ +49 (0) 771 / 8 32 23-90
✉ info.gam@gedore.com
🌐 gedore-automotive.com

GEDORE TOOLS, INC.

Only for USA, Canada & Mexico / Sólo para EE.UU., Canadá y México
Seulement pour les USA, le Canada et le Mexique
7187 Bryhawke Circle, Suite 700
North Charleston, SC 29418, USA

☎ +1-843 / 225 50 15
☎ +1-843 / 225 50 20
✉ info@gedoretools.com
🌐 gedore.com

Version 06/2023

KL-0215-36..(EN230501).indd



ENGLISH

EN

EN

Address of the manufacturer

GEDORE Automotive GmbH

Breslauer Straße 41 // 78166 Donaueschingen - GERMANY

+49 (0)771/83223-71 // info.gam@gedore.com

Imprint

In the course of improvement and adaptation to the state of the art, we reserve the right to make changes with regard to appearance, dimensions, weights and properties, and performance.

This does not imply any claim to correction or subsequent delivery of already delivered products. Deletions can be made at any time without any legal claim arising.

Instructions for use and safety are not binding. They never substitute for any legal or trade association regulations.

We do not accept any liability for printing errors.

Any reproduction, in whole or in part, requires the prior written consent of **GEDORE Automotive GmbH**.

All rights reserved worldwide.

© Copyright by **GEDORE Automotive GmbH** Donaueschingen (GERMANY)

We refer to our general terms and conditions, which can be found in the imprint at:

www.gedore-automotive.com



CONTENTS

1. READ AND UNDERSTAND FOR YOUR SAFETY	4
1.1 Target group.....	4
1.2 Obligations of the owner.....	4
1.3 Intended use	4
1.4 Reasonably foreseeable misuse	4
1.5 Personal protective equipment.....	5
1.6 Labelling of the warnings.....	5
1.7 Work environment	5
1.8 Emissions	5
1.9 Basic safety instructions and warnings.....	6
1.10 Maintenance	7
1.11 Troubleshooting.....	7
1.12 Care / Storage	7
1.13 Repair	7
1.14 Environmentally friendly disposal.....	7
2. PRODUCT DESCRIPTION.....	8
2.1 Component overview.....	8
2.2 KL-0215-36... - Hydraulic pumps	9
2.3 KL-0040-2... - Pressure gauge.....	10
2.4 KL-0040-252... - Thread adapter	10
2.5 KL-0215-32... - Hydraulic couplings	10
3. COMPONENT OVERVIEW	11
4. INSTALLATION INSTRUCTIONS FOR HYRAULIC PUMP	12
5. EC DECLARATION OF INCORPORATION / UK DECLARATION OF INCORPORATION.....	14

1. READ AND UNDERSTAND FOR YOUR SAFETY



Read and understand these operating instructions **before** using the hydraulic pump (*pneumatic hydraulic pump*) and observe all safety and warning instructions! Misuse can result in **DEATH** or **SEVERE INJURIES**! These operating instructions are an integral part of the hydraulic pump. Keep them at a safe place for future reference, and always pass them on to subsequent users of the hydraulic pumps! The hydraulic pump complies with the recognised rules of technology as well as the relevant safety regulations!

1.1 Target group

These operating instructions are **exclusively** intended for skilled personnel in specialised motor vehicle workshops!

The hydraulic pump **must only be** used by skilled personnel in specialised motor vehicle workshops who are familiar with the basic regulations on work safety and accident prevention!

▼ **Never** allow unauthorised, inexperienced persons, minors and children, or persons with limited physical, sensory, and mental abilities to use the hydraulic pump!

1.2 Obligations of the owner

Pursuant to the German Ordinance on Industrial Safety and Health (*BetrSichV*), employers are obliged to provide their employees with safe work equipment in accordance with the recognised rules of technology and the relevant safety regulations!

▼ The owner of the hydraulic pump **must** ensure that **only** trained personnel in specialised vehicle workshops use the hydraulic pump!

▼ The owner of the hydraulic pump **must** ensure that the operating instructions are available to the user and that the user has completely read and understood the operating instructions **before** using the hydraulic pump!

▼ The owner of the hydraulic pump **must** ensure that the user is familiar with the basic regulations on work safety and accident prevention, and that personal protective equipment is available to him!

1.3 Intended use

The pneumatic hydraulic pump...

▼ **may only** be used on hydraulic cylinders for repair work on motor vehicles, such as removal and installation of drive shafts, wheel hubs, wheel bearings, silent blocks, suspension joints and extraction of injectors!

▼ **may only** be used with hydraulic cylinders which comply with all technical specifications!

▼ **may only** be used together with a pressure gauge specially adapted to the hydraulic cylinder for safe pressure control!

▼ **may only** be used up to the **max. specified load**!

▼ **may only** be used with **GEDORE Automotive** genuine spare parts!

▼ **may only** be used in the way described in these operating instructions!

▲ Any other use can result in **DEATH** or **SEVERE INJURIES**!

1.4 Reasonably foreseeable misuse

The pneumatic hydraulic pump...

▼ **must never** be used with hydraulic cylinders for lifting, lowering and supporting loads!

▼ **must never** be used to drive other tools or in any other way than intended!

▼ **must never** be used for series production with many operations within a few minutes!

▼ **must never** be used with a bridged, modified, or removed safety device!

▼ **must never** be modified, converted, or used for other purposes without authorisation!

▲ Use the hydraulic pump **always** as intended. Any other use can result in **DEATH** or in **SERIOUS INJURIES**!

1.5 Personal protective equipment

For your safety, always wear personal protective equipment when using the hydraulic pump! The hydraulic pump can bring about mechanical hazards, such as crushing, cutting, and shock injuries.



Always wear **EYE PROTECTION** (see DIN EN 166, OSHA 29 CFR 1910.133, ANSI Z87) when using the hydraulic pump to protect yourself against parts or particles flying about!

When using the hydraulic pump, flying parts or particles can cause **SEVERE INJURIES** to your **eyes!**



Always wear **PROTECTIVE GLOVES** (e.g. DIN EN 388, OSHA 29 CFR 1910.138, ANSI 105) when using the hydraulic pump to protect yourself against sharp edges and crushing between parts!

When working with the hydraulic pump, sharp edges and crushing between parts can cause **SEVERE INJURIES** to your **hands!**



Always wear **SAFETY SHOES** (for example to DIN EN ISO 20345, OSHA 29 CFR 1910.136, ANSI Z41) when using the hydraulic pump to protect yourself against dropping parts!

When working with the hydraulic pump, dropping parts can cause **SEVERE INJURIES** to your **feet and toes!**

EN

1.6 Labelling of the warnings

Warnings warn of potential hazards. Always observe these warnings to avoid **DEATH** or **INJURIES!**

For better differentiation, warnings in these operating instructions are classified as follows:

Warning sign	Meaning
	Indicates a hazardous situation, which, if not avoided, could cause DEATH or SERIOUS INJURIES .
	Indicates a hazardous situation which, if not avoided, could cause MODERATE or MINOR INJURIES .
	Indicates a situation which, if not avoided, could cause damage to the tool or an object in its vicinity.
	Note on important information and useful tips.

1.7 Work environment

Only use the hydraulic pump in a safe working environment and **do not** expose it to extreme temperatures, direct sunlight or extreme humidity and moisture!

- When using the hydraulic pump, the workplace **must** be clean and tidy.
- The workplace **must** be sufficiently large and illuminated.
- The workplace **must** be on a solid and non-skidding floor.
- The workplace **must** be safeguarded against access of unauthorised persons.
- The workplace **must** be at room temperature between -10°C and +40°C.

1.8 Emissions

Hydraulic oil can drip or escape when using the hydraulic pump and thus pose a hazard to the environment.

- Immediately** remove leaking hydraulic oil with oil binding agents or a rag, for example.
- In case of skin contact with hydraulic oil, clean the affected area **immediately** with degreasing soap and water.
- Dispose of pollutants such as hydraulic oil in an **environmentally friendly** manner.
- Safety data sheets in accordance with Regulation (EC) No. 1907/2006, for hydraulic oil (**Alsus Hyd HLP 32 or 46**) can be found on the manufacturer's site on the Internet (**World Wide Web**) or, if required, contact **GEDORE Automotive GmbH**.

1.9 Basic safety instructions and warnings

⚠ WARNING / CAUTION - Failure to observe this warning may result in an accident or death.

When using the hydraulic pump, **always** observe the following safety and warning instructions as well as measures to avoid **DEATH** or **SERIOUS INJURY** as well as property damage due to hazards, misuse, abuse and unsafe handling!

- ✔ The connection of a hydraulic pump and a hydraulic cylinder with a hydraulic hose produces a machine which, due to its high pressure force, requires careful operation to avoid accidents.
- ✔ Read and understand these operating instructions **before using** the hydraulic pump, and observe all safety and warning instructions for **safe use!**
- ✔ **Always** read and understand the instructions for the hydraulic cylinder and the special tool kits on which the hydraulic pump is to be used!
- ✔ Always work with the hydraulic pump in accordance with the basic regulations on work safety, accident prevention and environmental protection!
- ✔ **Always** use the hydraulic pump as intended. **GEDORE Automotive** does not accept any liability or warranty or guarantee claims for injuries and damage resulting from improper use or disregard of the safety regulations.
- ✔ **Before each use**, check the hydraulic pump **carefully** for damage, loose parts, or unauthorised modifications. **Never** use it if you notice any such deficiencies! Professional inspection and repair may only be carried out by specially trained personnel from **GEDORE Automotive**
- ✔ **Only** use original spare parts and accessories from **GEDORE Automotive** for the hydraulic pump!
- ✔ **Always** observe the vehicle-specific manufacturer's specifications when working with the hydraulic pump!
- ✔ When using the hydraulic pump, **always** secure the connected hydraulic cylinder against falling down and being thrown around, e.g. by holding on to it or using a safety harness or a holding device!
- ✔ **Never** use the hydraulic pump for batch processing with many operations within a few minutes!
- ✔ **Never** use the hydraulic pump when you are tired or under the influence of alcohol, drugs, or medication!
- ✔ **If necessary**, carry, lift, and position severe parts with the help of a second specialist!
- ✔ **Before using** the hydraulic pump, ensure that **no** unauthorised persons are in the immediate environment!
- ✔ Always observe the **max. load capacity** when using the hydraulic pump, and **never** exceed it!
- ✔ **Never** stand in axial extension of the hydraulic cylinder when using the hydraulic pump, especially when it is under load!
- ✔ Wear your personal protective equipment such as safety goggles, protective gloves, safety shoes during work!
- ✔ **Never** leave the hydraulic pump unattended in loaded condition on the vehicle!
- ✔ **Never** hit the hydraulic pump with a hammer or other objects and **never** clamp it in a vice!
- ✔ **Always** avoid dropping, hitting or knocking the hydraulic pump and **always** place it safely on a clean and level floor!
- ✔ **Before each use**, check the moving parts of the hydraulic pump for sufficient lubrication and lubricate them if necessary!
- ✔ Stop work **immediately** if you are unsure about using the hydraulic pumps and contact **GEDORE Automotive if necessary!**
- ✔ If damage to the hydraulic pump is detected, do **no longer** use it for safety reasons! Professional inspection and repair may only be carried out by specially trained personnel from **GEDORE Automotive!**
- ✔ **Never** operate the hydraulic pump if it is not connected to the hydraulic cylinder, otherwise the pressure hose and the connecting pieces may be damaged!
- ✔ **Always** use the hydraulic pump together with a pressure gauge specially adapted to the hydraulic cylinder for safe pressure control!
- ✔ **Only** use hydraulic cylinders that comply with all technical requirements of the hydraulic pump!
- ✔ **Never** use the hydraulic pump on hydraulic cylinders which are used for lifting, lowering and supporting loads!
- ✔ **Never** use the hydraulic pump with a hydraulic cylinder that pumps more oil back into the tank than the hydraulic pump can hold!
- ✔ **Never** connect the hydraulic pump to an extended hydraulic cylinder or disconnect it from an extended hydraulic cylinder!
- ✔ **Never** carry the hydraulic pump by the hydraulic hose during transport.

1.10 Maintenance

Perform maintenance on the hydraulic pump **at regular intervals** and **only** when the tool is not subject to pressure! Poor and improper maintenance can damage the hydraulic pump, thus causing **DEATH** or **SEVERE INJURIES!**

Prior to each use:

- ✔ **Prior to each use**, check the hydraulic pump **carefully** for damage, loose parts, or unauthorised modifications!
- ✔ **Prior to each use** of the hydraulic pump, check the moving parts for contamination and damage. If necessary, clean them and subsequently lubricate them!

Recommended: Every 24 months:

- ✔ Have the hydraulic pump professionally checked **every 24 months** by authorised **GEDORE Automotive** specialists!

1.11 Troubleshooting

Always troubleshoot the hydraulic pump when they are depressurised!

Problem: Hydraulic oil escapes from the hydraulic coupling between hydraulic cylinder and hydraulic pump.

Reason: Hydraulic coupling contaminated or loose.

Remedy: Clean and retighten the hydraulic coupling. Top up lacking hydraulic oil (**HLP 32 or 46**) at the hydraulic pump.

Problem: The hydraulic pump does not build up pressure or only very slowly.

Reason: The pressure release valve on the hydraulic pump is open or hydraulic oil is missing.

Remedy: Close the pressure release valve on the hydraulic pump completely and top up missing hydraulic oil (**HLP 32 or 46**) on the hydraulic pump.

1.12 Care / Storage

CAUTION

Improper care and storage can damage the hydraulic pump.

- ✔ Therefore, **never** immerse the hydraulic pump in water, solvents, or other cleaning liquids.
- ✔ After use, clean all parts of the hydraulic pump with a dry and clean cleaning cloth.
- ✔ Store the hydraulic pump and the operating instructions in a dry and clean place.

1.13 Repair

WARNING

Improper repair of the hydraulic pump can result in **DEATH** or **SEVERE INJURIES**.

- ✔ If damage, loose parts or unauthorised modifications have been found on the hydraulic pump, it must no longer be used for safety reasons!
 - ✔ Repair may only be carried out by specially trained personnel from **GEDORE Automotive GmbH**!
 - ✔ **Only** use original spare parts and accessories from **GEDORE Automotive** for the hydraulic pump!
- If necessary, contact us, the **GEDORE Automotive** for a professional inspection and repair of the hydraulic pump.

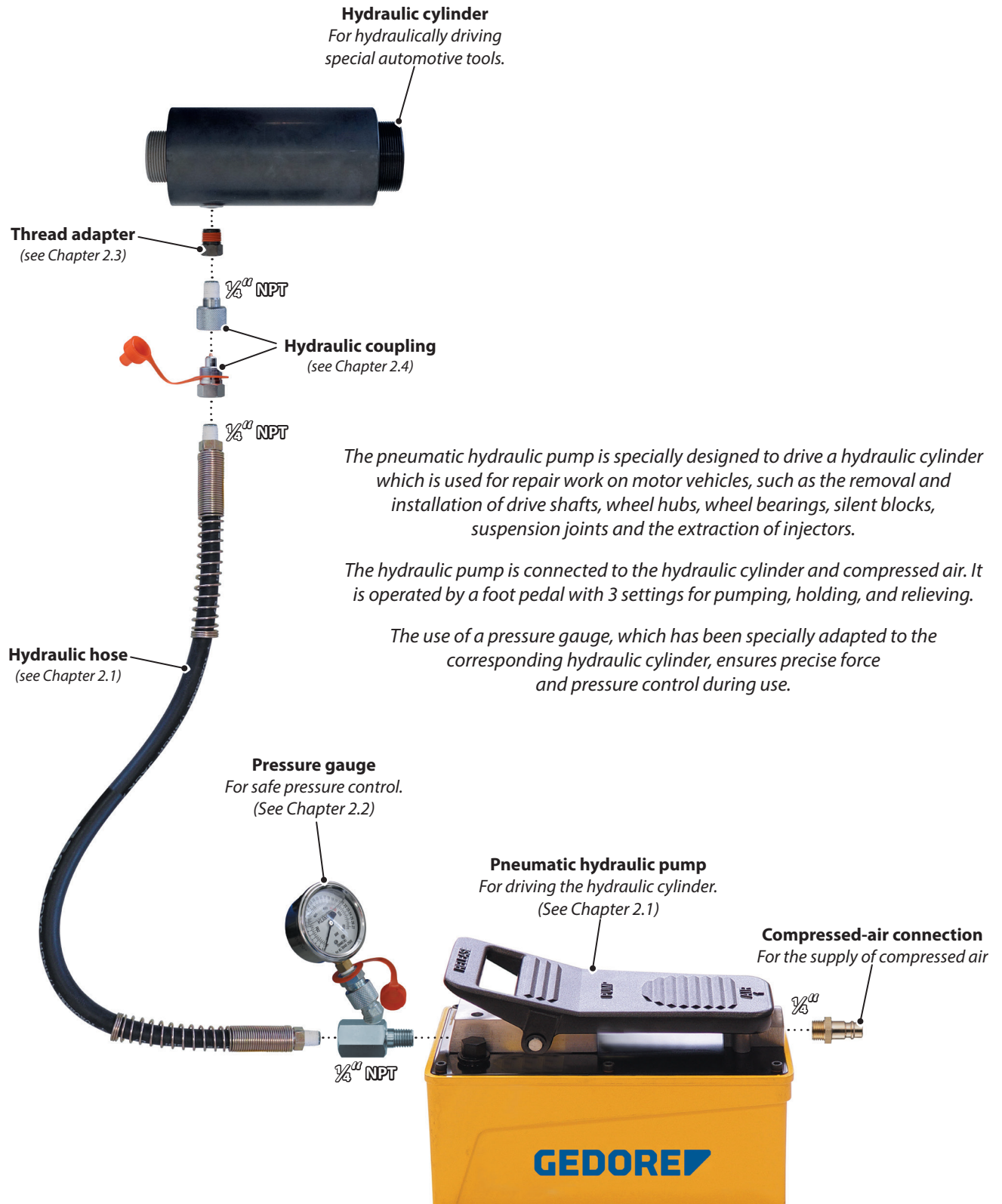
1.14 Environmentally friendly disposal

Dispose of the hydraulic pump and the packaging material in an environmentally compatible way in accordance with the legal requirements. If necessary, ask your local authorities about environmentally friendly disposal options.

2. PRODUCT DESCRIPTION

2.1 Component overview

This overview shows basic components, designations, and information on the **GEDORE AUTOMOTIVE** hydraulic pump.



2.1 KL-0215-36... - Pneumatic hydraulic pump



KL-0215-36 M25 - Pneumatic hydraulic pump with pressure gauge 17t



Specifications

Oil quantity:..... 1.5l
 Oil flow rate at 0 bar: 1l/min
 Oil flow rate at 700 bar: 0.18l/min
 Hydraulic oil: HLP 32 or 46
 Compressed air: 7.5 - 14 bar
 Compressed air thread: 1/4"
 Max. hydraulic pressure: 700bars
 Pressure gauge Ø: 71mm
 Measuring gauge
 of the pressure gauge: 0...17t
 Weight: 8.1 kg

Scope of delivery

Item	Part no.	Description	Qty.
1	KL-0215-360	Hydraulic pump without hose	1
2	KL-0040-2529	Pressure gauge 17t	1
3	KL-0215-362	Hydraulic hose 2.5m with coupling half, hose side	1
4	KL-0215-322	Coupling half, cylinder side 1/4"NPT	1
5	KL-0040-2520	Adapter 3/8"NPT to 1/4"NPT	1

KL-0215-36 M28 - Pneumatic hydraulic pump with pressure gauge 28t



Specifications

Oil quantity:..... 1.5l
 Oil flow rate at 0 bar: 1l/min
 Oil flow rate at 700 bar: 0.18l/min
 Hydraulic oil: HLP 32 or 46
 Compressed air: 7.5 - 14 bar
 Compressed air thread: 1/4"
 Max. hydraulic pressure: 700 bars
 Pressure gauge Ø: 71mm
 Measuring gauge
 of the pressure gauge: 0...28t
 Weight: 8.1kg

Scope of delivery

Item	Part no.	Description	Qty.
1	KL-0215-360	Hydraulic pump without hose	1
2	KL-0040-2829	Pressure gauge 28t	1
3	KL-0215-362	Hydraulic hose 2.5m with coupling half, hose side	1
4	KL-0215-322	Coupling half, cylinder side 1/4"NPT	1
5	KL-0040-2520	Adapter 3/8"NPT to 1/4"NPT	1

2.2 KL-0040-2... - Pressure gauge



KL-0040-2229 - Pressure gauge for GEDORE Automotive hydraulic cylinder 10t



Specifications

Max. measuring gauge:..... 0 - 1000 bar / 0 - 15t
 Pressure gauge Ø:71mm
 Connecting thread:..... 1/4"NPT

KL-0040-2529 - Pressure gauge for GEDORE Automotive hydraulic cylinder 17t



Specifications

Max. measuring gauge:..... 0 - 1000 bar / 0 - 27t
 Pressure gauge Ø:71mm
 Connecting thread:..... 1/4"NPT

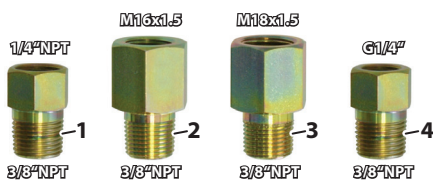
KL-0040-2829 - Pressure gauge for GEDORE Automotive hydraulic cylinder 28t



Specifications

Max. measuring gauge:..... 0 - 1000 bar / 0 - 40t
 Pressure gauge Ø:71mm
 Connecting thread:..... 1/4"NPT

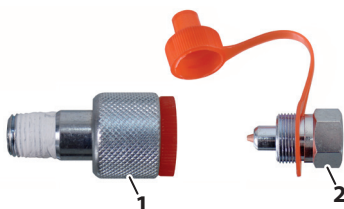
2.3 KL-0040-252... - Thread adapter



Item	Part no.	Description
1	KL-0040-2520	Adapter 3/8"NPT to 1/4"NPT (e.g. Gedore, Longus, Rodcraft)
2	KL-0040-2521	Adapter 3/8"NPT to M16x1.5 (e.g. Matra)
3	KL-0040-2522	Adapter 3/8"NPT to M18x1.5 (e.g. Weber)
4	KL-0040-2523	Adapter 3/8"NPT to G1/4" (e.g. Nike)

ⓘ Hydraulic cylinder from Blackhawk, Car Bench, Celette, Enerpac, OTC and Yale already have 3/8"NPT threads.

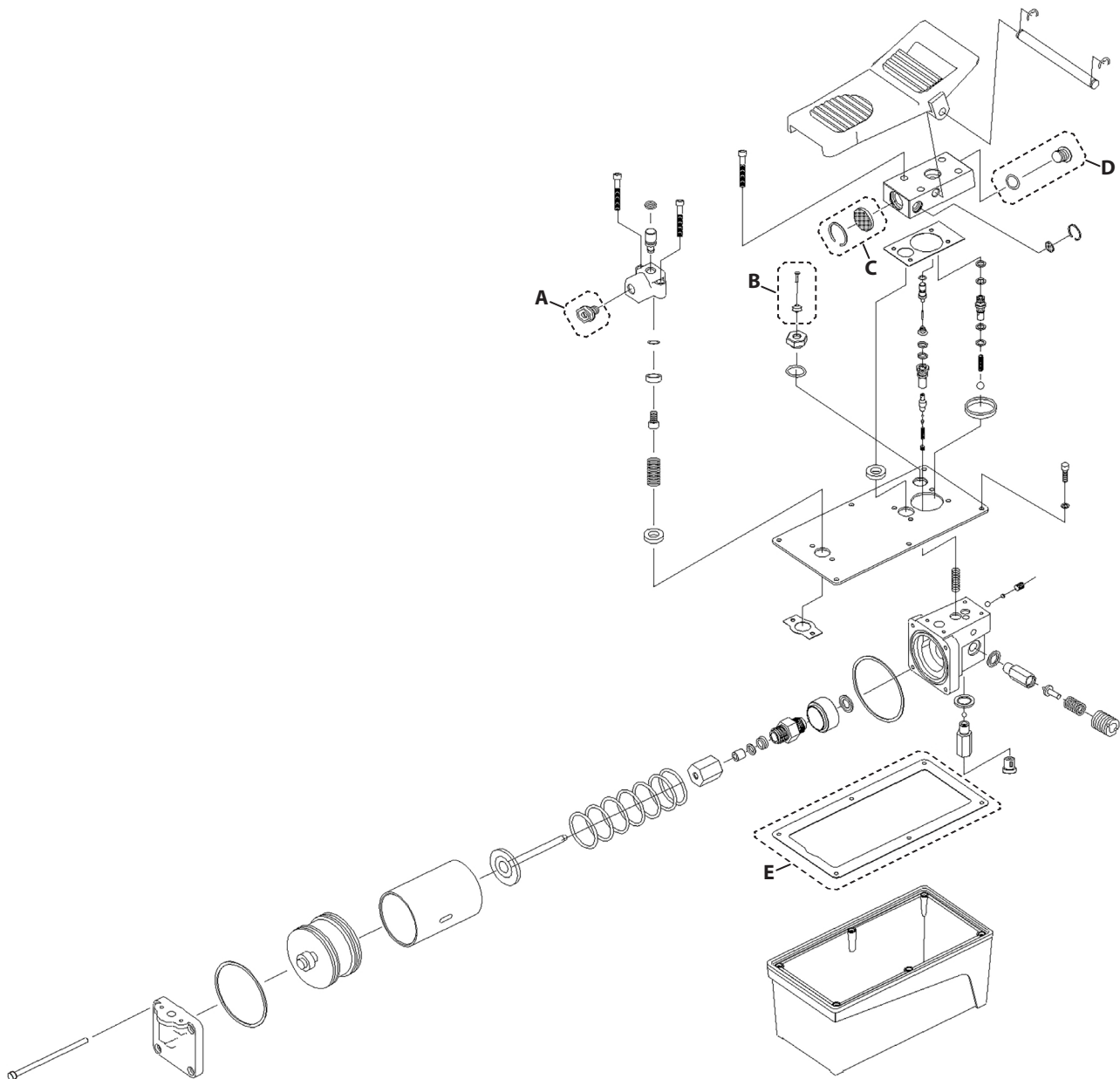
2.4 KL-0215-32... - Hydraulic Couplings



Item	Part no.	Description
1	KL-0215-322	Coupling half, <u>cylinder</u> side 1/4" NPT
2	KL-0215-321	Coupling half, <u>hose</u> side 1/4" NPT

3. SINGLE COMPONENT OVERVIEW

This overview shows the individual parts of the hydraulic pump - **KL-0215-360**



KL-0215-360 - Hydraulic pump

Item	Description	Qty.
A	Plastic lid	1
B	Oil end cap with needle for ventilation	1
C	Silencer	1
D	Plastic lid	1
E	Seal	1
A - E	Repair kit - KL-0215-3601 A	1

4. INSTALLATION INSTRUCTIONS FOR HYRAULIC PUMP

These installation instructions specify the requirements and conditions that must be met so that the partly completed machine can be properly assembled with the other parts to form the complete machine and used without compromising the safety and health of persons.

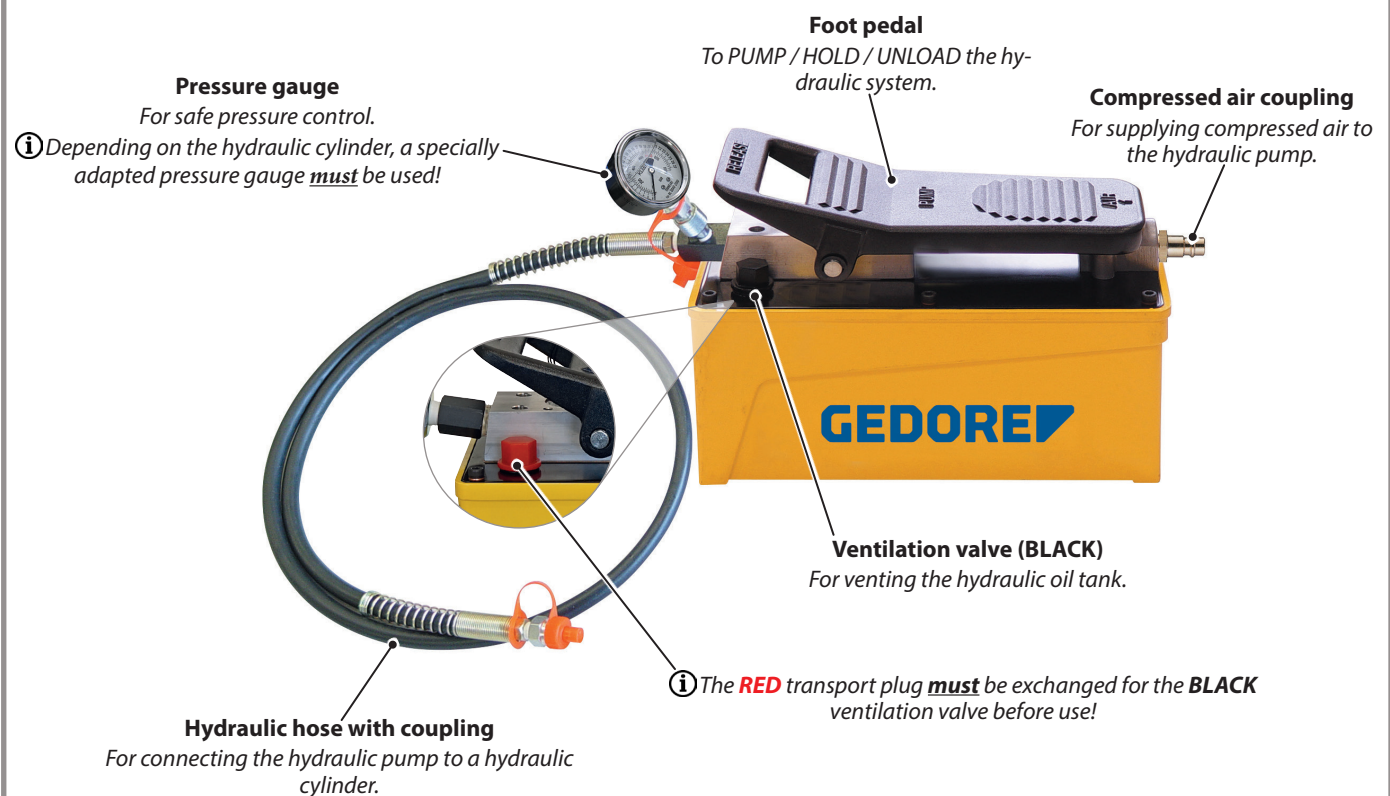
⚠ WARNING

The connection of a hydraulic pump and a hydraulic cylinder with a hydraulic hose produces a machine which, due to its high pressure force, requires careful operation to avoid accidents. Misuse can result in **DEATH** or **SEVERE INJURIES**!

- ✔ Read and understand all instructions for operating the machine **before use** and observe all safety and warning instructions **during use!**
- ✔ **Always** work with the machine in accordance with the basic regulations on work safety, accident prevention and environmental protection!
- ✔ **Always** use the machine as intended. **GEDORE Automotive** does not accept any liability or warranty or guarantee claims for injuries and damage resulting from improper use or disregard of the safety!
- ✔ The technical requirements for the individual components of the machine, in particular the hydraulic pump and the hydraulic cylinder, must match!
- ✔ Stop work **immediately** if you are unsure about using the machine and contact **GEDORE Automotive if necessary!**

EN

KL-0028-36... - Pneumatic hydraulic pump



Technical requirements for the hydraulic cylinder

Max. admissible operating pressure: 70 MPa / 700 bar / 10150 psi
 Max. admissible oil flow rate: 1.00l/min / 1000cm³/min
 Max. admissible oil volume: 1.5l / 1500cm³
 Admissible hydraulic oil: HLP 32 or 46

Technical data of the hydraulic pump

Max. operating pressure: 700 bars
 Max. oil flow rate at 0 bar: 1.00l/min
 Max. oil flow rate at 700 bar: 0.18l/min
 Oil volume tank: 1.5l
 Hydraulic oil specification: HLP 32 or 46
 Compressed air connection: min. 7.5 - max. 14 bar

Behaviour in an emergency

1. Put the hydraulic pump out of operation immediately and secure it against unintentional operation.
2. Remove injured person(s) from the danger zone.
3. Initiate first aid measures and inform the doctor responsible.

Initial commissioning of the hydraulic pump

1. Before using the hydraulic pump for the first time, unscrew the **RED** transport plug and replace it with the **BLACK** ventilation valve.
① The **RED** transport plug prevents hydraulic oil from leaking during transport and must be replaced with the **BLACK** ventilation valve for ventilating the hydraulic oil tank.
2. Fit a hydraulic coupling matching the hydraulic pump to the corresponding hydraulic cylinder.
3. Screw in a suitable compressed air coupling to the hydraulic pump for the compressed air supply.

Connect the hydraulic pump

1. Connect the hydraulic pump to a suitable hydraulic cylinder via the hydraulic coupling. Make sure that the hydraulic coupling is seated correctly and tightly.
① Contaminated hydraulic couplings can damage the hydraulic system and lead to malfunctions.
① **Never** connect the hydraulic pump to an extended hydraulic cylinder. When releasing the hydraulic cylinder, this can cause the hydraulic pump to overflow and hydraulic oil to emerge.
2. Connect the hydraulic pump to a compressed air supply which provides **dried** and **oiled air** at a pressure between **7.5 bar** and a maximum of **14 bar**.

Bleeding the hydraulic system

When connecting a hydraulic cylinder, air can accumulate in the hydraulic system and lead to malfunctions. To bleed the hydraulic system, fully extend and retract the hydraulic cylinder without load **2 - 3 times**.

- ① During this process, the hydraulic pump must be positioned higher than the hydraulic cylinder. Turn the hydraulic pump slightly downwards so that the air can flow back into the oil tank of the hydraulic pump.

Checking or topping up the hydraulic oil level

First unscrew the **BLACK** ventilation valve on the hydraulic pump. The oil level must be approx. 1 cm below the upper edge of the bore. If necessary, top up with hydraulic oil **HLP 32 or 46**, but do not overfill the hydraulic pump. Then screw the **BLACK** ventilation valve back in.

- ① The fill level must always be checked with a retracted and absolutely pressure-free hydraulic cylinder. Only use prescribed hydraulic oil **HLP 32 or 46**.

Use the hydraulic pump

PUMP: To do this, slowly depress the foot pedal in the direction of **PUMP*** until the required pressure or piston stroke is reached on the hydraulic cylinder. Observe the pressure on the pressure gauge and **never** exceed the max. permissible pressure of the connected hydraulic cylinder or the hydraulic pump itself.

HOLD: To do this, release the foot pedal, which now automatically moves to the centre position and the pressure is maintained.

RELEASE: To do this, press the foot pedal in the direction of **RELEASE*** until the pressure has dropped or the piston on the hydraulic cylinder has retracted.

* Labelled on the foot pedal

5. EC DECLARATION OF INCORPORATION / UK DECLARATION OF INCORPORATION

EC DECLARATION OF INCORPORATION (Original EC Declaration of Incorporation)

Name and address of the manufacturer

GEDORE Automotive GmbH
Breslauer Straße 41
78166 Donaueschingen, GERMANY



We herewith declare that the **partly completed machine** described below

Designation: Hydraulic pump

Series / type: KL-0215-36...

complies with all relevant provisions of the **Machinery Directive 2006/42/EC, Annex II B** of the European Parliament and of the Council of 17 May 2006 on machinery and amending Directive 95/16/EC.

The declaration loses its validity if the **partly completed machine** is rebuilt or modified without our consent.

Applied harmonised EN standards:

EN 1494:2000+A1:2008 - *Mobile or movable lifting machinery and associated equipment*

Other applied national technical standards and specifications:

DIN EN IEC/IEEE 82079-1:2021-09 - *Preparation of information for use (instructions for use) of products - Principles and general requirements*

Authorised representative of GEDORE Automotive GmbH for the compilation of all technical documents:

Head of product development, Breslauer Straße 41, 78166 Donaueschingen, GERMANY

Additional information:

The partly completed machine may only be put into operation after it has been established that the machine into which the partly completed machine is to be used, complies with the provisions of the **Machinery directive 2006/42/EC**. The installation instructions have been prepared in accordance with Annex VI of the **Machine directive 2006/42/EC**.

Donaueschingen, 17.05.2023



ppa. Michael Wehler, Head of Global Business Development, GEDORE Automotive GmbH

UK DECLARATION OF INCORPORATION (Original UK Declaration of Incorporation)

Name and address of manufacturer

GEDORE Automotive GmbH
Breslauer Straße 41
78166 Donaueschingen, GERMANY



We hereby declare that the **incomplete machine** described below

Designation: Hydraulic pump

Series / Type: KL-0215-36...

conforms to all relevant provisions of the **Supply of Machinery (Safety) Regulations 2008, Annex II 1B** for machinery and safety components is applicable to equipment with defined characteristics and functionalities, which are manufactured or sold and operated in the UK.

The declaration loses its validity if the **incomplete machine** is converted or modified without our consent.

Designated (GB) or harmonised (NI) standards applied:

BS EN 1494:2000+A1:2008 - *Mobile or movable jacks and associated lifting equipment*

Other technical standards and specifications applied:

EN IEC/IEEE 82079-1:2020 - *Preparation of information for use (instructions for use) of products - Part 1: Principles and general requirements*

Authorised representative for compiling the technical documents:

GEDORE Torque Ltd. / Tannery Ln, Gosden Common / Guildford GU5 0AJ, United Kingdom

Additional information:

The incomplete machine may only be put into operation when it has been determined that the machine with which the incomplete machine is to be used complies with the provisions of the **Machinery (Safety) Regulations 2008**. The assembly instructions were created in accordance with Annex VI of the **Machinery (Safety) Regulations 2008**.

Donaueschingen, 17 May 2023



ppa. Michael Wehler, Head of Global Business Development, GEDORE Automotive GmbH

GEDORE-Werkzeugfabrik GmbH & Co. KG

Remscheider Straße 149
42899 - Remscheid
Postfach 120361
47873 Remscheid
GERMANY

Vertrieb DEUTSCHLAND

☎ +49 (0) 2191 / 596-0
☎ +49 (0) 2191 / 596-230
✉ info@gedore.com
🌐 www.gedore.com

Sales INTERNATIONAL

☎ +49 (0) 2191 / 596-910
☎ +49 (0) 2191 / 596-911
✉ info@gedore.com
🌐 www.gedore.com

GEDORE TOOLS, INC.

Only for USA, Canada & Mexico
Sólo para EE.UU., Canadá y México
Seulement pour les USA, le Canada et le Mexique
7187 Bryhawke Circle, Suite 700, North Charleston, SC 29418, USA

☎ +1-843 / 225 50 15
☎ +1-843 / 225 50 20
✉ info@gedoretools.com
🌐 www.gedoretools.com

Worldwide GEDORE service centers and offices are listed on the Internet at: www.gedore.com

GEDORE Automotive GmbH

Breslauer Straße 41
78166 - Donaueschingen
Postfach 1329
78154 Donaueschingen
GERMANY

Vertrieb DEUTSCHLAND

☎ +49 (0) 771 / 8 32 23-0
☎ +49 (0) 771 / 8 32 23-90
✉ info.gam@gedore.com
🌐 gedore-automotive.com



www.gedore-automotive.com