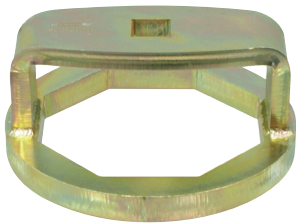




KL-1023-..Series

Sockets for Axle Repairs, HGV



Product information EN
 ⚠ Read and understand before use!

www.gedore-automotive.com



GEDORE Automotive GmbH

Breslauer Straße 41
 78166 - Donaueschingen
 Postfach 1329
 78154 Donaueschingen - GERMANY

☎ +49 (0) 771 / 8 32 23-0
 ☎ +49 (0) 771 / 8 32 23-90
 ✉ info.gam@gedore.com
 🌐 gedore-automotive.com

GEDORE TOOLS, INC.

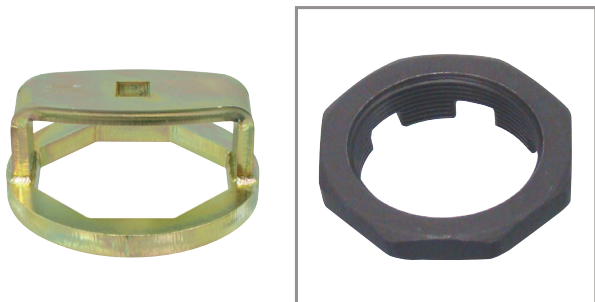
Only for USA, Canada & Mexico / Sólo para EE.UU., Canadá y México
 Seulement pour les USA, le Canada et le Mexique
 7187 Bryhawke Circle, Suite 700
 North Charleston, SC 29418, USA

☎ +1-843 / 225 50 15
 ☎ +1-843 / 225 50 20
 ✉ info@gedoretools.com
 🌐 gedore.com

Version 07/2023

KL-1023-..Serie (EN230715).indd

📷2: KL-1023-080



Product description

This tool allows for the easy and professional loosening and tightening of hub caps and axle nuts.

KL-1023-.. series

KL-1023-080 - Hub Cap and Axle Nut Socket, 80mm waf, octagonal

Applicable to Scania 4-Series HGVs/trucks (models from 1996 onwards/from 16t onwards); e.g., to AM front axles (AM 740, AMA 740, AM 740D, AMA 740D).

Size (waf):80mm
 Profile:..... octagonal
 Drive:..... 3/4"
 Weight:1.4kg

Recommended Accessory:

KL-4007-411 - Swivel head breaker bar, 980mm,
8571-01 - Torque wrench, 520-1000Nm

📷3: KL-1023-2095



KL-1023-2095 - Hub Cap and Axle Nut Socket, 95mm waf, octagonal

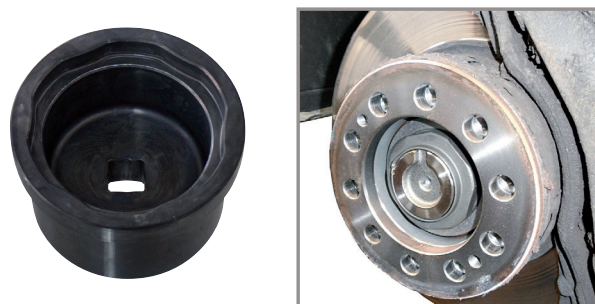
Applicable to BPW axle systems, e.g. as found on BPW EH.. (6.5-9t); EH.. (6t); EH.. (8-9t); ZR.. (8-9t); H.. (6.5-9t) Konv. / ECO; K.. (8-9t) Konv. / ECO; N.. (6-9t) Konv. / ECO; K.. (6.5t) Konv. / ALU hub; H.. (6-9t) oil lub.

Size (waf):95mm
 Profile:..... octagonal
 Drive:..... 3/4"
 Weigth: 2.27kg

Recommended Accessory:

KL-4007-411 - Swivel head breaker bar, 980mm,
8571-01 - Torque wrench, 520-1000Nm

📷4: KL-1023-9095



KL-1023-9095 - Axle Nut Socket, Size 95mm waf, special profile with rounded-corner hexagon

Applicable to Mercedes-Benz axle nuts with 95mm waf size and a special profile with rounded-corner hexagon. For example, found on Mercedes-Benz Discos Trailer axles (MP1 - MP4) with hub c/w bearings etc.

Size (waf):95mm
 Special profile: rounded-corner hexagon
 Drive:..... 3/4"

Recommended Accessory:

KL-4007-411 - Swivel head breaker bar, 980mm,
8571-01 - Torque Wrench, 520-1000Nm



KL-1023-100 - Hub Cap and Axle Nut Socket, 100mm waf, octagonal

Applicable to Scania 4-Series trucks (models from 1996 onwards/from 16t onwards), e.g., to AD/ADA (1100, 1300) rear axles.

Size (waf):..... 100mm
 Profile:..... octagonal
 Drive:..... 3/4"
 Weight:2.6kg

Recommended Accessory:

KL-4007-411 - Swivel head breaker bar, 980mm,
8571-01 - Torque Wrench, 520-1000Nm



KL-1023-115 - Hub Cap and Axle Nut Socket, 115mm waf, octagonal

Applicable to Volvo FH 12 and FH 16 (models from 1993 onwards/16t onwards), as well as Renault Premium DXI, front axle.

Alternative tools: 999-6773

Size (waf):..... 115mm
 Profile:..... octagonal
 Drive:..... 3/4"
 Weight: 2.64kg

Recommended Accessory:

KL-4007-411 - Swivel head breaker bar, 980mm
8571-01 - Torque Wrench, 520-1000Nm

⚠ SAFETY INSTRUCTIONS AND REGULATIONS

- ✔ Read and understand this product information **before using** the special tool, as it serves to familiarise you with the special tool and thus ensures **safe use!**
- ✔ Use the special tool **as intended** and **always** carry out maintenance and repair work in compliance with the regulations on occupational safety and accident prevention as well as the vehicle manufacturer's instructions!
- ✔ **Before each use**, check the special tool **carefully** for damage, loose parts, or unauthorised modifications. **Never** use it if you notice any such deficiencies!
- ✔ **Before each use**, check the moving parts on the **special tool** for dirt, if necessary clean and lubricate it **exclusively** with molybdenum disulphide paste, for example **KL-0014-0030!**
- ✔ **Always** wear your personal protective equipment, e.g. safety goggles, protective gloves, safety shoes, if necessary!
- ✔ Interrupt your work **immediately** if you are unsure about using the special tool, and contact **GEDORE Automotive GmbH if necessary!**
- ✔ Dispose of the special tool and its packaging material in an environmentally compatible way in accordance with the legal requirements. If necessary, ask your local authorities or **GEDORE Automotive GmbH** about environmentally friendly disposal options!

GEDORE-Werkzeugfabrik GmbH & Co. KG

Remscheider Straße 149
42899 - Remscheid
Postfach 120361
47873 Remscheid
GERMANY

Vertrieb DEUTSCHLAND

☎ +49 (0) 2191 / 596-0
☎ +49 (0) 2191 / 596-230
✉ info@gedore.com
🌐 www.gedore.com

Sales INTERNATIONAL

☎ +49 (0) 2191 / 596-910
☎ +49 (0) 2191 / 596-911
✉ info@gedore.com
🌐 www.gedore.com

GEDORE TOOLS, INC.

Only for USA, Canada & Mexico
Sólo para EE.UU., Canadá y México
Seulement pour les USA, le Canada et le Mexique
7187 Bryhawke Circle, Suite 700, North Charleston, SC 29418, USA

☎ +1-843 / 225 50 15
☎ +1-843 / 225 50 20
✉ info@gedoretools.com
🌐 www.gedoretools.com

Worldwide GEDORE service centers and offices are listed on the Internet at: www.gedore.com

GEDORE Automotive GmbH

Breslauer Straße 41
78166 - Donaueschingen
Postfach 1329
78154 Donaueschingen
GERMANY

Vertrieb DEUTSCHLAND

☎ +49 (0) 771 / 8 32 23-0
☎ +49 (0) 771 / 8 32 23-90
✉ info.gam@gedore.com
🌐 gedore-automotive.com



www.gedore-automotive.com