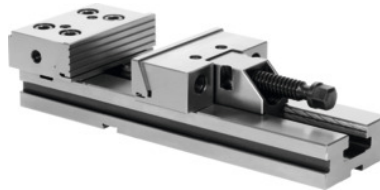




Modular vice, Jaw width A: 125mm



Order data

Order number	362110 125
GTIN	4045197708229
Item class	32P

Description

Version:

- Machine vice with pull-down jaws.
- Simple mechanical actuation (up to 3.5 t).
- Easy adjustment of jaw opening.
- Case-hardened HRC 60.
- Parallelism 0.02 mm.

Supplied with:

Component backstop, 2 T-nuts similar to No. 362160 size 18/16, 1 clamping wrench, 1 L-wrench for hexagon socket screws, 4 clamping claws.

Note:

See No. 362160 for other T-nuts.

Technical description

Colour code for suitable accessories	Modular HOLEX 125
Base body height G	40 mm
Transverse tenon slot n	16 mm
Clamping range b	150 mm
Weight	18.5 kg
Longitudinal tenon slot l	16 mm

Overall length L	345 mm
Jaw width A	125 mm
Jaw height C	40 mm
Type of product	Machine vice

Accessories

Pair of T-nuts T-slot dimension B / keyway 12/16 mm	362160 12/16
Prismatic jaw (piece) for jaw width 125 mm	362127 125
Smooth front jaw, hard (piece) for jaw width 125 mm	362147 125
Pair of T-nuts T-slot dimension B / keyway 14/16 mm	362160 14/16
Smooth front jaw, soft (piece) for jaw width 125 mm	362148 125
Longitudinally serrated front jaw (piece) for jaw width 125 mm	362146 125
Square top jaw (piece) for jaw width 125 mm	362132 125
Pair of T-nuts T-slot dimension B / keyway 20/16 mm	362160 20/16
Pair of T-nuts T-slot dimension B / keyway 16/16 mm	362160 16/16
Pair of T-nuts T-slot dimension B / keyway 18/16 mm	362160 18/16