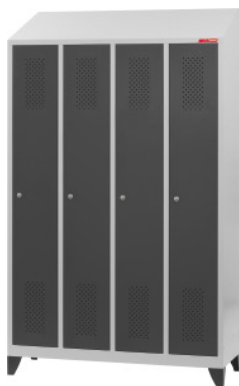




Garment locker with sloping roof, plastic feet and DOM cylinder lock, Number of compartments: 4



Order data

Order number

949622 4

GTIN

Item class

92S

Description

Version:

The body has a sloping roof, so that no objects can be placed on top of the locker. Compartment width 300 mm with welded-in hat shelf. Hanger rail has 3 sliding clothes hooks. Door with diamond pattern ventilation holes and pressed-in label frame. Choice between plastic feet or fitted base.

With high-quality cylinder lock.

Standard:**DIN 4547****Colour:**

Body light grey RAL 7035, doors signal blue RAL 5005 **powder-coated**. No special paint finishes available.

Note:

According to the TÜV GS certification, it is essential that all cabinets are secured against tipping over.

Technical description

suitable for integral helmets	yes
Standard	DIN 4547
Depth	500 mm
Number of compartments	4
Shelf width	220 mm
Number of fixed shelves	1
Height at the front	1800 mm
Number of clothes rails	1
Cabinet fronts	Plain sheet metal swing door
Lock version	Cylinder lock
Width	1190 mm
usable height of each clothing compartment	1260 mm
Weight	83 kg
Ventilation slots in the door	yes
Storage shelf depth	465 mm
usable height of each hat compartment with sloping roof	360 - 530 mm
usable width of each compartment	220 mm
usable depth of each compartment	465 mm
Support cabinet version	Plastic feet
Special paints available	no
Height at the rear	2000 mm
Sloping roof	yes
Material thickness	0.8 mm
Door opening angle	110°
Cylinder lock	modular barrel
Colour selection	RAL 7035, RAL 7016, RAL 5005
Type of product	Locker

Accessories

Clothes hanger pieces 1	949775 1
Additional shelf for shoes Compartment width 300 mm	949760 300
Clothes hanger pieces 10	949775 10
Mirror Type 1	949770 1
Plastic tray for shoes Type 1	949761 1