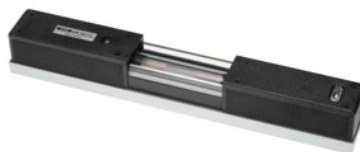




Neigungsmesstechnik o.K.

**Shaft spirit level, Base Length×Accuracy: 300/2mm****Order data**

Order number	468810 300/2
GTIN	4030616406305
Item class	46U

**Description****Version:**

Sturdy housing of high quality special casting; hammer finish. Vee and flat base with precision-ground contact surfaces in the angle (important for marking out, aligning, etc.). All measuring faces are exactly parallel to the axis of the vial. One longitudinal and one transverse vial each of glass. With insulated handles on the housing and protective glass over the vials.

Full thermal insulation over the entire housing protects against the effects of the heat of hands or breath. Recess in the body permits a side view of the vial. Supplied in a sturdy plastic case with suitable inlay.

**Application:**

For aligning surfaces, shafts, machines etc.

**Standard:**

**DIN 877**

**Accuracy:**

1 = with very high sensitivity longitudinal vial **0.02 mm/m.**

2 = with high sensitivity longitudinal vial **0.1 mm/m.**

4 = with normal sensitivity longitudinal vial **0.4 mm/m.**

**Note:**

Magnetic version available on request.

**Technical description**

Accuracy class	2
Sole width	42 mm

Scale divisions	0.1 mm/m
Sole length	300 mm
Standard	DIN 877
Packaging	sturdy box
Calibration	H2
Type of product	Spirit level

### Services

Calibration Engineer's level / electronic clinometer Accuracy 0,10 mm/m	026620 0,10
----------------------------------------------------------------------------	-------------