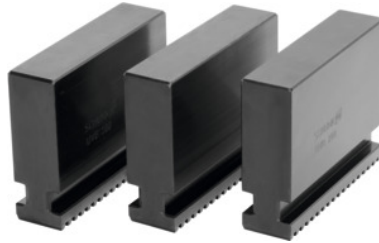




## Soft monoblock jaw set, 3 pieces straight serration, for chuck type: 200



### Order data

Order number	313227 200
GTIN	2050001929204
Item class	33T

### Description

#### Version:

Serrations hardened and ground.

#### Application:

As the jaws can be changed or adjusted to the required diameter **in just a few seconds**, it is useful to have several jaw sets on hand ready for use at the machine. **This minimises set-up times.** The jaw units consist for example of several sets of base jaws with soft top jaws, which can be machined out to the required diameters. This rationalisation method is not only necessary for NC machines but also important for every lathe type.

#### Material:

C45, annealed

#### Suitable for:

SchUNK self-centring chucks No. 313115; 313117; 313135; 313137, RöhM self-centring chucks Duro No. 313120; 313140 and other self-centring chuck systems.

#### Note:

- **Hard top and stepped jaws purchased subsequently must be ground internally in the chuck for concentricity and run-out.**
- **Please check the serrations when matching to lathe chucks.**

### Technical description

Height H	65 mm
for chuck type	200 mm

Width B	22 mm
Length L	84 mm
Type of product	Self-centring chuck jaws