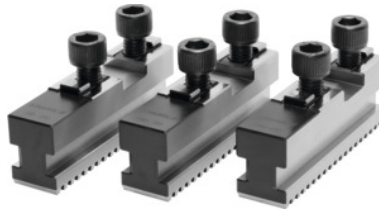


**Base jaw set, 3 pieces, straight serration, for chuck type: 315****Order data**

| | |
|--------------|---------------|
| Order number | 313207 315 |
| GTIN | 2050001929020 |
| Item class | 33T |

Description**Application:**

As the jaws can be changed or adjusted to the required diameter **in just a few seconds**, it is useful to have several jaw sets on hand ready for use at the machine. **This minimises set-up times.** The jaw units consist for example of several sets of base jaws with soft top jaws, which can be machined out to the required diameters. This rationalisation method is not only necessary for NC machines but also important for every lathe type.

To accept hard or soft top jaws. Fastening screws for top jaws are supplied.

Technical description

| | |
|-----------------|--------------------------|
| Length L | 115 mm |
| Slot width A | 20 mm |
| Tenon width D | 12 mm |
| for chuck type | 315 mm |
| Width B | 32 mm |
| Bore spacing b | 40 mm |
| Type of product | Self-centring chuck jaws |

