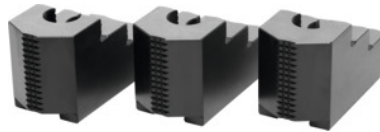




## Stepped top jaws set, 3 pieces, for chuck type: 250



### Order data

Order number	313470 250
GTIN	2050001929648
Item class	33T

### Description

**Version:**

**Precision milled** slots and **precision ground** serrations, **burnished**.

Hardened.

**Application:**

For external and internal clamping.

**Material:**

Quality product made of 16MnCr5.

**Suitable for:**

**Heavy-duty chucks** from Schunk, Röhms and other heavy-duty chuck manufacturers.

**Optional extras:**

T-nuts No. 313505 – 313605.

**Note:**

**Hard top and stepped jaws purchased subsequently must be ground internally in the chuck for concentricity and runout.**

- **When fitting to a chuck, please check serrations, slot width (D), and hole spacing (a, b).**
- **Aluminium top jaws on request.**

### Technical description

Height H	58 mm
Hole centre spacing a	34 mm
Length L	103.5 mm
Slot width D	21 mm

Bore spacing b	25 mm
Width B	50 mm
for chuck type	250 mm
Type of product	Heavy-duty lathe chuck jaws