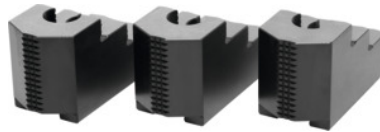




## Stepped top jaws set, 3 pieces, for chuck type: 165



### Order data

Order number	313470 165
GTIN	2050001929624
Item class	33T

### Description

#### Version:

**Precision milled** slots and **precision ground** serrations, **burnished**.

Hardened.

#### Application:

For external and internal clamping.

#### Material:

Quality product made of 16MnCr5.

#### Suitable for:

**Heavy-duty chucks** from Schunk, Röhms and other heavy-duty chuck manufacturers.

#### Optional extras:

T-nuts No. 313505 – 313605.

#### Note:

**Hard top and stepped jaws purchased subsequently must be ground internally in the chuck for concentricity and runout.**

- **When fitting to a chuck, please check serrations, slot width (D), and hole spacing (a, b).**
- **Aluminium top jaws on request.**

### Technical description

for chuck type	165 mm
Hole centre spacing a	18 mm
Height H	49 mm
Slot width D	17 mm

Width B	40 mm
Length L	72.5 mm
Bore spacing b	19 mm
Type of product	Heavy-duty lathe chuck jaws