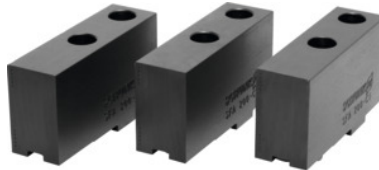




Soft top jaw set, 3 pieces, for chuck type: 250



Order data

Order number	313220 250
GTIN	2050002054431
Item class	33T

Description

Version:

Unstepped, for boring out to individual clamping \emptyset . **Precision milled** contact face, **burnished**.

Version of the advertising text:

Unstepped, for boring out to individual clamping \emptyset .

Application:

As the jaws can be changed or adjusted to the required diameter **in just a few seconds**, it is useful to have several jaw sets on hand ready for use at the machine. **This minimises set-up times**. The jaw units consist for example of several sets of base jaws with soft top jaws, which can be machined out to the required diameters. This rationalisation method is not only necessary for NC machines but also important for every lathe type.

For fitting to hardened base jaws. For clamping irregularly shaped or already machined components which have to be protected against damage. The jaws are machined according to the contours of the component.

Use of the advertising text:

For fitting to hardened base jaws.

Material:

Quality product made of 16MnCr5.

Suitable for:

Schunk self-centring chucks No. 313115; 313117; 313135; 313137, Röhms self-centring chucks Duro No. 313120; 313140 and other self-centring chuck systems.

Note:

Aluminium top jaws **on request**.

Technical description

Width B	30 mm
Length L	125 mm
for chuck type	250 mm
Tenon length A	20 mm
Slot width D	12 mm
Bore spacing b	40 mm
Height H	50.5 mm
suitable for colour code	Schunk self-centring chucks and jaws
suitable for colour code	Röhm self-centring chucks and jaws
Type of product	Self-centring chuck jaws