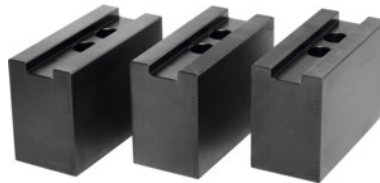




## Top jaws set, 3 pieces, for chuck type: 250



### Order data

Order number	313415 250
GTIN	2050001929495
Item class	33T

### Description

**Version:**

**Precision milled** slots and **precision ground** serrations, **burnished**.

**Material:**

Quality product made of 16MnCr5.

**Suitable for:**

**Heavy-duty chucks** from Schunk, Röhms and other heavy-duty chuck manufacturers.

**Optional extras:**

T-nuts No. 313505 – 313605.

**Note:**

- **When fitting to a chuck, please check serrations, slot width (D), and hole spacing (a, b).**
- **Aluminium top jaws on request.**

### Technical description

for thread DIN 912	M16
Length L	120 mm
Width B	50 mm
Slot width D	21 mm
Hole centre spacing a	30 mm
Height H	80 mm
also suitable for chuck type	315 mm

for chuck type	250 mm
Bore spacing b	28 mm
Type of product	Heavy-duty lathe chuck jaws