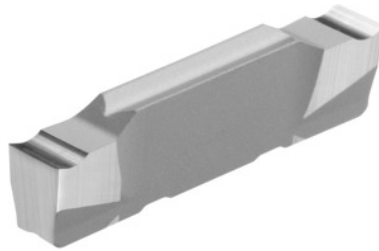


**Garant**
**Parting-off insert right-hand 10°, HU7310, Groove width w: 2,5mm**


### Order data

Order number	273678 2,5
GTIN	4045197716668
Item class	21L

### Technical description

Groove width w	2.5 mm
Tolerance groove width w	±0.03 mm
Feed f	0.06 - 0.17 mm/rev.
Finishing/roughing assignment	Skrubbearbejdning-sletbearbejdning
Tool material	Carbide
Coating	uncoated
Main application	N
Secondary application	Ti
Cutting conditions	continuous
Grade	HU7310
Corner radius R	0.05 mm
Number of changes/inserts	2
Indexable insert profile	right-hand
Type of product	Indexable insert for grooving

**User data**

	<b>Suitability</b>	<b>V<sub>c</sub></b>	<b>ISO code</b>
Alu plastics	suitable	350 m/min	N
Aluminium (short chipping)	suitable	350 m/min	N
Alu > 10% Si	suitable	280 m/min	N
Ti > 850 N/mm <sup>2</sup>	suitable	50 m/min	S
continuous	suitable		
irregular	suitable only under restricted conditions		
wet maximum	suitable		