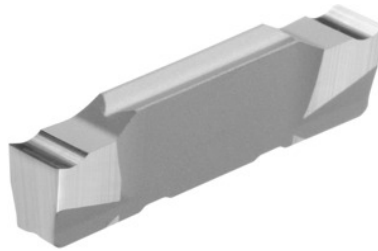


Garant**Parting-off insert left-hand 10°, HU7310, Groove width w: 2mm****Order data**

Order number	273680 2
GTIN	4045197719102
Item class	21L

Technical description

Tolerance groove width w	±0.03 mm
Groove width w	2 mm
Feed f	0.05 - 0.15 mm/rev.
Finishing/roughing assignment	Skrubbearbejdning-sletbearbejdning
Tool material	Carbide
Coating	uncoated
Main application	N
Secondary application	Ti
Cutting conditions	continuous
Grade	HU7310
Corner radius R	0.05 mm
Number of changes/inserts	2
Indexable insert profile	left-hand
Type of product	Indexable insert for grooving

User data

	Suitability	V_c	ISO code
Alu plastics	suitable	350 m/min	N
Aluminium (short chipping)	suitable	350 m/min	N
Alu > 10% Si	suitable	280 m/min	N
Ti > 850 N/mm ²	suitable	50 m/min	S
continuous	suitable		
irregular	suitable only under restricted conditions		
wet maximum	suitable		