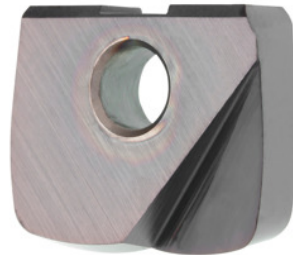


**Garant**
**Milling insert Ø 25 mm stub conical, Type: ST1400**

**Order data**

|              |               |
|--------------|---------------|
| Order number | 212792 ST1400 |
| GTIN         | 4062406103323 |
| Item class   | 21A           |

**Description**
**Version:**

**Detailed application values can be found in the GARANT machining handbook No. 110020.**

· **Radius, concentricity and interchange accuracy:  $\pm 0.015$  mm.**

Feed  $f_z$  in steel < 60 HRC: 0.12 mm

Grade: HB4015

**Technical description**

|                        |         |
|------------------------|---------|
| Type                   | ST1400  |
| Grade                  | HB4015  |
| Corner radius          | 4 mm    |
| Tool material          | Carbide |
| Axial length of wiper  | 25 mm   |
| Radial length of wiper | 50 mm   |
| Corner radius $R_1$    | 4 mm    |
| Flute length $L_c$     | 12.5 mm |

|  |                              |
|--|------------------------------|
| Feed $f_z$ in steel < 1400 N/mm <sup>2</sup> | 0.18 mm                      |
| Feed $f_z$ in steel < 60 HRC                 | 0.12 mm                      |
| Number of changes/inserts                    | 1                            |
| Coating                                      | TiN                          |
| Type of product                              | Indexable insert for milling |