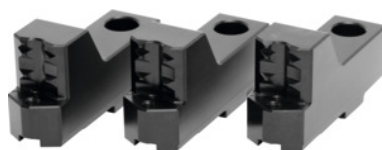




## Claw jaws set, 3 pieces, for chucks, Ø 160 mm, Type: 4



### Order data

Order number	313230 4
GTIN	2050001929266
Item class	33T

### Description

#### Application:

As the jaws can be changed or adjusted to the required diameter **in just a few seconds**, it is useful to have several jaw sets on hand ready for use at the machine. **This minimises set-up times.** The jaw units consist for example of several sets of base jaws with soft top jaws, which can be machined out to the required diameters. This rationalisation method is not only necessary for NC machines but also important for every lathe type.

For external clamping, ideally suited to clamping blanks.

#### Material:

Quality product made of 16MnCr5, hardened.

#### Suitable for :

Schunk self-centring chucks No. 313115; 313117; 313135; 313137, Röhms self-centring chucks Duro No. 313120; 313130; 313140 and other self-centring chuck systems.

#### Note:

Example of clamping range of No. 313115 - 313137.

suitable for colour code: Röhms self-centring chucks and jaws

Clamping range: 114 - 150 mm

### Technical description

Clamping range	114 - 150 mm
for chuck type Ø	160 mm
Product name attribute	Ø 160 mm
Slot width D	8 mm

Bore spacing b	32 mm
Tenon length A	18 mm
suitable for colour code	Schunk self-centring chucks and jaws
suitable for colour code	Röhm self-centring chucks and jaws
Type of product	Self-centring chuck jaws