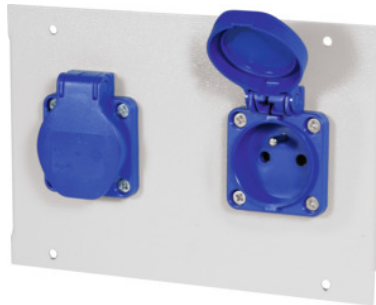


Garant
Module for energy and media, Module type: CZ250V/2

Order data

Order number	928470 CZ250V/2
GTIN	4062406116965
Item class	91P

Description
Version:

Of sheet metal **modular design**. All power components include **cables** and **plugs**. Plug and play insertion principle. Powered modules are pre-assembled with a connecting cable and 3-pin plug No. 928491 size 3 for direct connection to the distribution block. Module No. 928470 size CEE400/5 pre-assembled with a connecting cable and 5-pin plug No. 928491 size 5. All modules for the power supply are configured as shielded contact sockets (SCHUKO) and satisfy protection class I.

Description:
Technical data for industrial plug-in system (No. 928490; 928491; 928492):

- **Maximum connection value 230 V / AC, 16 A or 400 V / AC, 16 A.**
- **Total load capacity at AC: 3.5 kW.**
- **Maximum connected load, three-phase AC: 10.5 kW.**
- **Conductor cross-section of the pre-assembled cables:**
 - 3 × 1.5 mm² for single-phase AC (L, N, PE)**
 - 5 × 1.5 mm² for three-phase AC (L1, L2, L3, N, PE)**
- **Protection class 1**
- **Index of Protection IP 20.**

Application:

The following list shows our socket types with descriptions of the respective types of plugs. Suitability for use in the various countries can be determined by the type of plug.
Germany / DE: Type F

Switzerland / CH: Type J
 Italy / IT: Type L
 France / FR: Type E
 Czech Republic / CZ: Type E
 England / GB: Type G
 Denmark / DK: Type K
 USA / US: Type B

Suitable for:

No. 925885, 927325 – 927329, 928411 – 928413, 928421, 928441 – 928444, 928500 and 928510.

Colour:

RAL 7035 light grey **powder coated**.

Note:

- **When assembling the media tracks with modules individually, check that the maximum number of module divider units is not exceeded.**
- **The articles No. 928470 size US110V/1 and US110V/2 can only be fitted in combination with the following modules: _ON/OFF1, _COVER, _AIR/S, _NET, _USB, _USB/5V _LINK.**
- **Initial connections and also the connection of plugs or sockets to cables should only be performed by a qualified electrician.**

Technical description

Description	2 Schuko sockets with hinged covers
Divider unit	2 units
Nominal voltage	250 V
Rated current	16 A
Height	137 mm
Weight	0.2 kg
Width	200 mm
Plug type, input	GST plug-in system
Number of sockets type E	2
On/Off switch	no
Socket type	E
Type of current	AC
Material thickness	1.5 mm
Colour selection	RAL 9002, 7035, 7005, 7016, 6011, 5018, 5012, 5011, 5005, 3003

Type of product

Power module