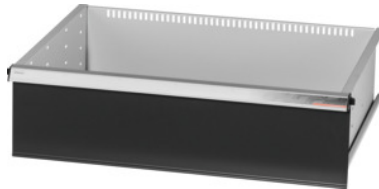


Garant GRIDLINE

**Drawer with one-handed individual drawer release system, 200 kg, 26×20G,  
Drawer front height: 250mm****Order data**

Order number	930636 250
GTIN	4062406131562
Item class	9GK

**Description****Version:**

**100% full extension drawers** with differential runners. Aluminium handle with labelling strips that can be exchanged and rewritten.

Slots at 25 mm intervals to take slotted dividers (from drawer front height 75 mm).

With **individual drawer release system** prevents the opening of drawers during transport.

Absolutely necessary for all roller cabinets.

Load capacity 200 kg.

**Suitable for:**

Tool cabinet casing 30×24G No. 930625.

**Supplied with:**

Drawers each complete with 1 pair drawer runner rails.

**Colour:**

Drawer body RAL 7035 light grey, drawer fronts RAL 7016 anthracite, **powder-coated. Drawer body not configurable, always RAL 7035 light grey.**

**Technical description**

Front height	250 mm
Individual drawer release system	One-hand
Weight	17 kg
Drawer/pull-out shelf load capacity	200 kg

Drawer usable area in G	26×20
Usable height	225 mm
Usable depth in G	20
Usable width in G	26
Application range	Assembly trolley
Usable depth	500 mm
Usable width	650 mm
with individual drawer release system	yes
Material thickness	1.2 mm
Drawer runner extension (partial/full extension)	100 %
Colour selection	RAL 9002, 7035, 7005, 7016, 6011, 5018, 5012, 5011, 5005, 3003
Drawer usable width × usable depth in G	26×20G
Type of product	Drawer

## Accessories

Labelling strip set 10 pieces Drawer usable width in G 26	951030 26
One-hand individual drawer release system Drawer usable width in G 26	951020 26
Pack of PVC covers for handles 10 pieces Drawer usable width in G 26	951032 26
Handle end caps 20 pieces Type 10	951025 10