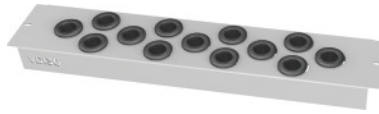


Garant GRIDLINE

Shelf with tool sockets for cabinet / compartment width 30 G, for tool shanks: VDI30**Order data**

Order number	971560 VDI30
GTIN	4062406165215
Item class	9GI

Description**Suitable for:**

Installation on mounting rails No. 971525.

Cabinet width / compartment width 30G (cabinets of width 60G consist of 2 compartments each 30G).

Colour:

RAL 7035 light grey **powder coated**.

Technical description

Number of tool sockets	13
for tool shanks	VDI 30
Height	54 mm
Axial spacing A	71 mm
Depth	135 mm
Shelf load capacity / maximum distributed shelf load (on metal)	150 kg
Colour selection	RAL 9002, 7035, 7005, 7016, 6011, 5018, 5012, 5011, 5005, 3003
Type of product	CNC carrier system

Accessories

Mounting rails for shelves with tool sockets, pair suitable for cabinet depth in G 20

971525 20

Mounting rails for shelves with tool sockets, pair suitable for cabinet depth in G 28

971525 28

Plastic insert Type VDI30

947390 VDI30