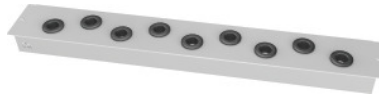


Garant GRIDLINE

Shelf with tool sockets for cabinet / compartment width 40 G, for tool shanks: C4



Order data

Order number	971570 C4
GTIN	4062406165383
Item class	9GI

Description

Suitable for:

Installation on mounting rails No. 971525.

Cabinet width / compartment width 40G (cabinets of width 80G consist of 2 compartments each 40G).

Colour:

RAL 7035 light grey **powder coated**.

Technical description

Number of tool sockets	9
for tool shanks	C4
Axial spacing A	97 mm
Depth	135 mm
Height	54 mm
Shelf load capacity / maximum distributed shelf load (on metal)	150 kg
Colour selection	RAL 9002, 7035, 7005, 7016, 6011, 5018, 5012, 5011, 5005, 3003
Type of product	CNC carrier system

Accessories

Plastic insert Type C4	947390 C4
Mounting rails for shelves with tool sockets, pair suitable for cabinet depth in G 20	971525 20
Mounting rails for shelves with tool sockets, pair suitable for cabinet depth in G 28	971525 28