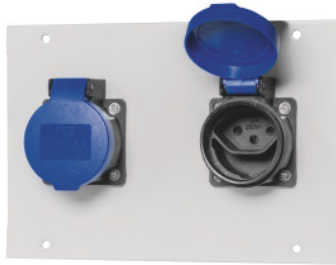


Garant GRIDLINE

ESD module for energy and media, Module type: CH250V/2



Order data

Order number	972220 CH250V/2
GTIN	4062406167691
Item class	9GW

Description

Version:

Of sheet metal **modular design**. All power components include **cables** and **plugs**. Plug and play insertion principle. Powered modules are pre-assembled with a connecting cable and 3-pin plug No. 928491 size 3 for direct connection to the distribution block. Module No. 928470 size CEE400/5 pre-assembled with a connecting cable and 5-pin plug No. 928491 size 5. All modules for the power supply are configured as shielded contact sockets (SCHUKO) and satisfy protection class I.

Description:

Technical data for industrial plug-in system (No. 928490; 928491; 928492):

- **Maximum connection value 230 V / AC, 16 A or 400 V / AC, 16 A.**
- **Total load capacity at AC: 3.5 kW.**
- **Maximum connected load, three-phase AC: 10.5 kW.**
- **Conductor cross-section of the pre-assembled cables:**
 - 3 × 1.5 mm² for single-phase AC (L, N, PE)**
 - 5 × 1.5 mm² for three-phase AC (L1, L2, L3, N, PE)**
- **Protection class 1**
- **Index of Protection IP 20.**

Application:

The following list shows our socket types with descriptions of the respective types of plugs. Suitability for use in the various countries can be determined by the type of plug.

Germany / DE: Type F

Switzerland / CH: Type J

Italy / IT: Type L
 France / FR: Type E
 Czech Republic / CZ: Type E
 England / GB: Type G
 Denmark / DK: Type K
 USA / US: Type B

Suitable for:

No. 972200 – 972203.

Colour:

Light grey similar to RAL 7035 **ESD powder-coated.**

Note:

- **When assembling the media tracks with modules individually, check that the maximum number of module divider units is not exceeded.**
- **The articles No. 972220 size US110V/1 and US110V/2 may only be fitted in combination with the following modules: _ON/OFF1, _COVER, _AIR/S, _NET, _USB, _USB/5V, _LINK.**
- **All plastic components (e.g. covering caps) are not ESD conductive.**
- **Initial connections and also the connection of plugs and sockets to cables should be performed only by a qualified electrician.**

Technical description

Rated current	10 A
Description	2 Schuko sockets with hinged covers
Nominal voltage	250 V
Divider unit	2U
On/Off switch	no
Plug type, input	GST plug-in system
Number of sockets type J	2
Socket type	J
Type of current	AC
Material thickness	1.5 mm
electrostatic characteristic	EGB/ESD
Type of product	Power module