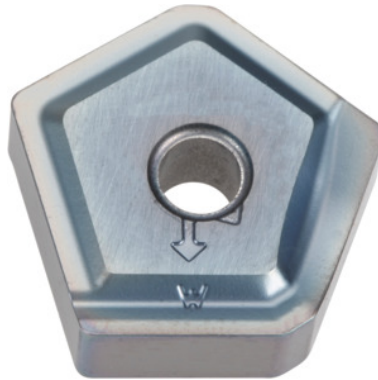



PNEG 1106XNER-W Wiper, PR1525, Type: GG

Order data

Order number	223328 GG
GTIN	4960664732937
Item class	25A

Description
Version:

10-edge pentagonal indexable inserts for stable and economical machining.

W - 2-edge wiper insert.

Note:

Standard application values for $a_e = 0.3 \times D$.

Plane edge: 10 mm

Feed f_z per tooth: max. 0.2 mm

Technical description

Feed f_z per tooth	max. 0.2 mm
Type	GG
Number of changes/inserts	10
ISO code indexable insert	PNEG 1106XNER-W
Grade	PR1525
Tool material	Carbide

Plane edge	10 mm
Type of product	Indexable insert for milling

User data

	Suitability	V_c	ISO code
GG(G)	suitable	180 m/min	K
dry	suitable		
Air	suitable		