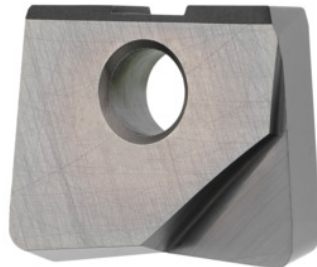


**Garant**
**Milling insert Ø 16 mm, Type: ST1400**

**Order data**

Order number	212724 ST1400
GTIN	4045197761637
Item class	210

**Description**
**Version:**

Detailed application values can be found in the GARANT machining handbook No. 110020.

· Maximum concentricity and interchange accuracy:  $\pm 0.015$  mm.

**Application:**

Torus cutter inserts with corner radius. For reduction of cutting forces and minimisation of vibration.

Feed  $f_z$  in steel < 60 HRC: 0.2 mm

Grade: HB7520

**Technical description**

Type	ST1400
Grade	HB7520
Corner radius	1 mm
Tool material	Carbide
Corner radius R	1 mm
Feed $f_z$ in short-chipping aluminium	0.3 mm

Feed $f_z$ in steel < 1400 N/mm <sup>2</sup>	0.3 mm
Feed $f_z$ in steel < 60 HRC	0.2 mm
Number of changes/inserts	1
Type of product	Indexable insert for milling