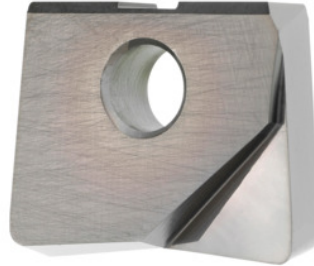


**Garant**
**Milling insert Ø 20 mm, Type: ST1400**

**Order data**

|              |               |
|--------------|---------------|
| Order number | 212731 ST1400 |
| GTIN         | 4045197761682 |
| Item class   | 21A           |

**Description**
**Version:**

Detailed application values can be found in the GARANT machining handbook No. 110020.

· **Maximum concentricity and interchange accuracy:  $\pm 0.015$  mm.**

**Application:**

Torus cutter inserts with corner radius. For reduction of cutting forces and minimisation of vibration.

Feed  $f_z$  in steel < 60 HRC: 0.25 mm

Grade: HB7520

**Technical description**

|  |         |
|--|---------|
| Type                                   | ST1400  |
| Grade                                  | HB7520  |
| Corner radius                          | 1 mm    |
| Tool material                          | Carbide |
| Corner radius R                        | 1 mm    |
| Feed $f_z$ in short-chipping aluminium | 0.35 mm |

|  |                              |
|--|------------------------------|
| Feed $f_z$ in steel < 1400 N/mm <sup>2</sup> | 0.35 mm                      |
| Feed $f_z$ in steel < 60 HRC                 | 0.25 mm                      |
| Number of changes/inserts                    | 1                            |
| Type of product                              | Indexable insert for milling |