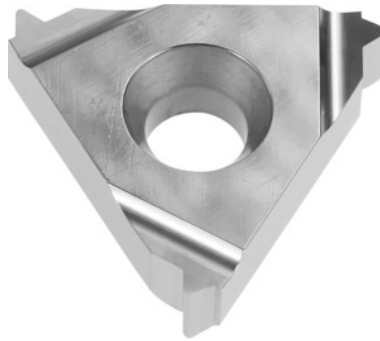


**Garant**
**Full profile insert 60°, external, right-hand, HU7315, Pitch: 3mm**

**Order data**

Order number	270705 3
GTIN	4045197765055
Item class	21J

**Description**
**Version:**

**Full profile inserts 60°** for external threads to DIN / ISO R 262 (DIN 13) tolerance class 6g.

**Technical description**

Tool material	Carbide
Thread pitch	3 mm
Internal/external application	external
Application type	right-hand
Indexable insert profile	Full profile
Grade	HU7315
Tolerance class	DIN 13 6g
Thread type	MF-LH
Thread type	MF
Thread type	M-LH

Thread type	M
Flank angle	60 degrees
Thickness	3.6 mm
Insert size L	16 mm
Type of product	Indexable insert for thread turning

### User data

	Suitability	V <sub>c</sub>	ISO code
Alu plastics	suitable	200 m/min	N
Aluminium (short chipping)	suitable	100 m/min	N
Alu > 10% Si	suitable	90 m/min	N
Ti > 850 N/mm <sup>2</sup>	suitable only under restricted conditions	50 m/min	S
CuZn	suitable	110 m/min	N
continuous	suitable		
irregular	suitable		
interrupted	suitable		
wet maximum	suitable		