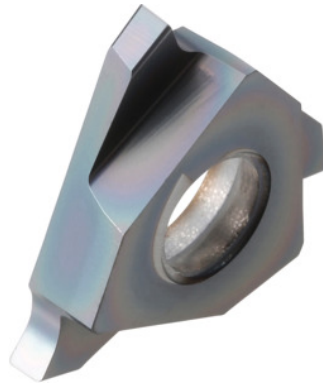


Garant
Grooving insert left-hand, HB9635, Slot width m (H13): 2,15mm

Order data

| | |
|--------------|---------------|
| Order number | 273908 2,15 |
| GTIN | 4045197768551 |
| Item class | 21J |

Technical description

| | |
|--|------------------------------------|
| Blade width w | 2.15 mm |
| Slot width m (H13) | 2.15 mm |
| for circlips to DIN 471 / 472 ring thickness | 2 mm |
| t_{\max} | 2.5 mm |
| Finishing/roughing assignment | Skrubbearbejdning-sletbearbejdning |
| Tool material | Carbide |
| Corner radius R | 0.2 mm |
| Insert assignment | left-hand |
| Grade | HB9635 |
| Slots to standard | DIN 472 |
| Slots to standard | DIN 471 |

| | |
|---|-------------------------------|
| Number of changes/inserts | 3 |
| Main application | P |
| Secondary application | M |
| Cutting conditions | continuous |
| Cutting speed v_c main application | 110 - 170 mm/min |
| Cutting speed v_c secondary application | 90 - 140 mm/min |
| Type of product | Indexable insert for grooving |

User data

| | Suitability | V_c | ISO code |
|--------------------------------|---|-----------|----------|
| Steel < 500 N/mm ² | suitable | 170 m/min | P |
| Steel < 750 N/mm ² | suitable | 170 m/min | P |
| Steel < 900 N/mm ² | suitable | 150 m/min | P |
| Steel < 1100 N/mm ² | suitable | 110 m/min | P |
| Steel < 1400 N/mm ² | suitable only under restricted conditions | 90 m/min | P |
| INOX < 900 N/mm ² | suitable | 140 m/min | M |
| INOX > 900 N/mm ² | suitable | 140 m/min | M |
| GG(G) | suitable only under restricted conditions | 170 m/min | K |
| continuous | suitable | | |
| wet maximum | suitable | | |
| dry | suitable | | |