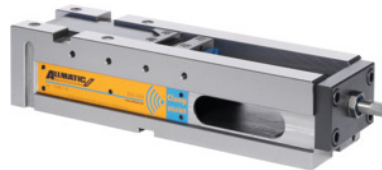




TITAN 2 NC high-pressure vice with "Clamp assist" clamping force measurement function, Type: 125M



Order data

Order number	361304 125M
GTIN	4250364402866
Item class	34A

Description

Version:

Feature:

Clamps for the modular clamping system.

Increased force travel for secure clamping of blanks in combination with a pull-down function.

Jaws secured with M12 socket head screws.

8 mm lost clearance when pulled down, 3 mm for Gripp.

Clamping can be achieved close to the neutral line.

Jaws are compatible with earlier models.

Outlet for chips and coolant. Precise location slots.

Tapped holes for component backstop and for extension.

Maximum clamping force 40 kN.

Slides induction hardened. Side, top and bottom faces ground. With 25H6 M10 holes at 200 mm pitch for zero-point clamping system.

Feature:

Can be installed vertically.

Advantage:

Precise and powerful multi-function high-pressure vice.

- **Reliable clamping of blank parts, thanks to the extra long stroke of the high-pressure spindle.**
- **Precision machined finished parts, base body machined all round.**

Function:

Clamping exclusively with adjustable torque wrench (maximum 30 Nm).

Using special high pressure spindle and mechanical power intensifier.

High-pressure spindle provided with force measurement sensing, fully encapsulated. Transmission of the clamping force measurements by radio (2.4 GHz) to the measurement system No. 361306. Unaffected by vibration, protected against coolant fluids.

Application:

For conventional clamping, grip clamping and pull-down clamping. Clamping of **flame-cut and saw-cut blanks** by **hardened replaceable grip elements piercing** into the workpiece. Suitable for all materials up to tensile strength of 1000 N/mm². Can be used horizontally or laterally.

For measuring and checking the **actual** clamping forces.

Supplied with:

3 hexagon L-wrenches, bi-hex socket 14 AF, 4 stepless adjustable clamps.

Optional extras:

For jaws see No. 361331 – 361970.

Torque wrench No. 656050 size 60. Clamping stud No. 360025.

Note:

For the "Clamp assist" electronic reception unit see No. 361306. Clamp capacity extension available using base body No. 360420 size 125.

Version: Zero-point clamping system

Weight: 30 kg

Overall length L: 455 mm

Base body length a: 398 mm

Base body width B: 126 mm

Base body height c: 100 mm

f: 21 mm

Technical description

Overall length L	455 mm
m	180 mm
f	21 mm
r	118 mm
Base body width B	126 mm
Weight	30 kg
Base body height c	100 mm
Cross-slot	20 mm
g	24 mm
Colour code for suitable accessories	Titan 2
Longitudinal slot	20 mm

Type	125M
Base body length a	398 mm
Version	Zero-point clamping system
Series	Titan 2
Type of product	Machine vice

Accessories

Stepped jaw for gripp inserts movable for type 125	361347 125
Carrier jaw movable rigid for type 125	361340 125
Gripp insert height 5.5 mm round Type	361250
Extension base for type 125K	361230 125K
Gripp insert carbide height 7.1 - 8.6 mm Type	361242
Gripp insert with 2 spikes, height 3.7 – 5.2 mm Type	361238
Carrier jaw movable pivoting for type 125	361336 125
“Clamp assist” clamping force measurement system Type CA	361306 CA
Gripp insert with 4 spikes height 3.7 - 5.2 mm Type	361241
Reduced-width hard gripper jaw, 64 mm fixed for type 125	361356 125
Workpiece back-stop 3-dimensional Type 125	360435 125
Component backstop	360555
Carrier jaw fixed for type 125	361331 125
Reduced-width hard gripper jaw, 64 mm movable for type 125	361355 125
Reduced-width jaw movable for type 125	361353 125
5-face jaws for type FIX	361361 FIX
Pull-down set case for type 1	361346 1
Stepped jaw for gripp inserts fixed for type 125	361348 125
Pull-down set case for type 2	361346 2

Case set for 5-face jaw	361365
Gripp insert with 2 spikes, height 5.2 – 6.7 mm Type	361240
Clamping insert with coating, height 5.2 – 6.7 mm smooth Type	361245
Reduced-width jaw fixed for type 125	361354 125
5-face jaws for type MOBIL	361361 MOBIL