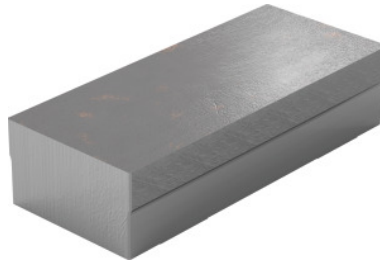


Garant
Soft top jaw, Type: 160S

Order data

Order number	363034 160S
GTIN	4062406221423
Item class	310

Description
Application:

For realising customised contours and for machining sensitive components.

Note:

Dovetail slide available for quick change of jaws. Version S of steel and A of aluminium. Sawn raw material, only machined on underside. Article 363034 80A may be clamped only to max. 12.5 Nm (12.5 Nm = 0.5 t). Article 363034 120A may be clamped only to max. 34 Nm (34 Nm = 1 t). Article 363034 160A may be clamped only to max. 82.5 Nm (82.5 Nm = 2 t).

Material: 1.7227

Material: 1.7227

Jaw width b: 160 mm

Jaw height h: 38 mm

Jaw length l: 66 mm

suitable for colour code: Xtric 125

Technical description

Jaw width b	160 mm
suitable for colour code	Xtric 125
Jaw height h	38 mm
Jaw length l	66 mm

Material	1.7227
Type of product	Vice jaws