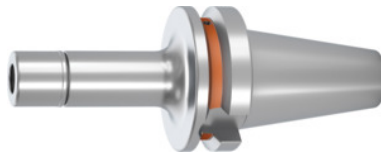


Garant
HiRunER precision ER collet chuck, BT 40 A = 100, for ER collet size: 16M

Order data

Order number	302844 16M
GTIN	4062406243432
Item class	31A

Description
Version:

External and internal tapers are ground. All shanks are hard turned for a smooth cutting action. Including Balluffchip bore, high-performance clamping nut (up to 25000 rpm).

Advantage:

- **Excellent concentricity in the system (chuck + collet + clamping nut), 3µm radial run-out with a 2µm collet, 6µm radial run-out with a 5µm collet.**
- **Extremely strong holding force (up to factor 2 better than the standard ER chuck).**
- **Vibration reduction effect due to 2-part clamping nut.**

Application:

For clamping tools with plain shank in collets to DIN 6499 – Form A and B.

Supplied with:

Precision clamping nut.

Optional extras:

Pull studs (PS) No. 308760 – 308806,
 PS wrenches No. 308820 – 308835,
 ER collets No. 308881 – 309434,
 Fahrion ER collets No. 308901 – 309434,
 ER clamping wrenches No. 309748; 309749; 309757; 309758.

Note:

- **Clamps only nominal Ø up to shank Ø tolerance h 10.**
- **Do not use the clamping nut in combination with a sealing washer.**
- **Use it in only combination with Fahrion collets.**

Clamping range: 1 - 10 mm

External Ø D: 24 mm

Spare ER clamping nut: 309618 16M

Technical description

Clamping range	1 - 10 mm
External Ø D	24 mm
Spare ER clamping nut	309618 16M
Adapter	BT 40 A = 100
Arbor standard	ISO 7388-2
Arbor standard	JIS B6339
Shape	ADB
Balance quality G at rotational speed	G 2.5 at 25,000 rpm
Concentricity	≤ 3 µm
Machining strategy	HSC
Machining strategy	HPC
Balluffchip bore	yes
Type of product	Collet chuck

Accessories

ER mini mono-nut for HiRunER mini collet chuck for ER 16M	309618 16M
HiRunER roller bearing wrench Type 16M	309757 16M
HiRunER roller bearing wrench for torque wrench Type 16M	309758 16M