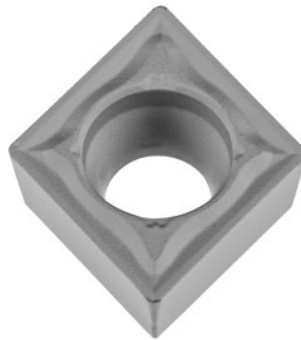



CCMT 120408, Grade: HBT020

Order data

Order number	260221 HBT020
GTIN	4062406257057
Item class	22D

Description

CCMT 120408 HBT020 Grade: HBT020
 Chip breaker: PM
 Cutting depth a_p : 0.5 - 2.5 mm
 Feed f : 0.12 - 0.3 mm/rev.
 Cutting speed v_c main application: 100 - 280 m/min

Technical description

Cutting depth a_p	0.5 - 2.5 mm
Chip breaker	PM
Main application	P
Tool material	Carbide
ISO code indexable insert	CCMT 120408
Coating	TiCN
Cutting speed v_c main application	100 - 280 m/min

Finishing/roughing assignment	Skrubbearbejdning-sletbearbejdning
Feed f	0.12 - 0.3 mm/rev.
Grade	HBT020
Corner radius	0.8 mm
Cutting conditions	slightly interrupted
Number of changes/inserts	2
Type of product	Indexable insert for turning