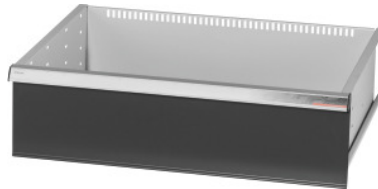


Garant GRIDLINE

Drawers for sliding-door large-capacity cabinets and heavy-duty cabinets Width 30G, 26×20G, Drawer front height: 300mm



Order data

Order number	942580 300
GTIN	4062406281335
Item class	9GI

Description

Version:

Drawers for incorporating in GridLine **sliding-door** large-capacity cabinets and heavy-duty cabinets.

Aluminium handles with labelling strips that can be exchanged and rewritten. New type of drawer concept for optimum equipment with dividing material.

Suitable for:

Cabinets No. 941045 – 941077; No. 942345 – 942367; No. 942745 – 942767, No. 942845 – 942867.

Colour:

Drawer body RAL 7035 light grey, drawer fronts RAL 7016 anthracite, **powder-coated. Drawer body not configurable, always RAL 7035 light grey.**

Note:

Size 30 and size 40 are suitable for cabinets of width 60G and 80G, since these have 2 compartments.

Drawers not suitable for swing door cabinets.

Technical description

Usable width in G	26
Usable height	275 mm
Weight	13 kg
Usable depth in G	20

Usable width	650 mm
Usable depth	500 mm
Material thickness	0.9 mm
Drawer/pull-out shelf load capacity	75 kg
Drawer runner extension (partial/full extension)	100 %
Colour selection	RAL 9002, 7035, 7005, 7016, 6011, 5018, 5012, 5011, 5005, 3003
Drawer usable width × usable depth in G	26×20G
Type of product	Drawer

Accessories

Non-slip mats set for drawers,5 pieces Dimension in G 26X20	951885 26X20
Comfort Close drawer closure damping system Load capacity of the drawer 75 kg	950180 75
Ribbed rubber mat for drawers Dimension in G 26X20	951910 26X20
Mat for drawers Dimension in G 26X20	951830 26X20