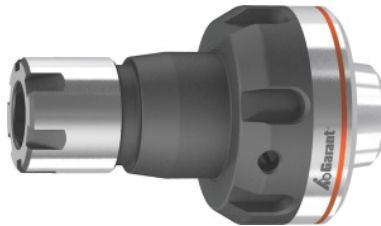


Garant
Quick-change toolholder, ER-mini with external nut ER 25, for ER collet size: 11

Order data

Order number	319771 11
GTIN	4062406328917
Item class	31V

Description
Version:

- **Two-part design consisting of base body and precision clamping nut.**
- **Made from high quality tool steel; all functional faces hardened and reworked.**

Advantage:

Extremely easy-to-use quick-change system for driven tools. Prepare the quick-change adapter with a tool and change it using a driven tool. The clamping nut is ball-bearing mounted.

Multi-flexible use:

- **Quick and easy exchange of adapters for the driven tool used.**
- **Suitable for all driven tools from various manufacturers with ER collet connection.**

Application:

For drilling and milling with driven tools with ER collet connection.

Concentricity: ≤ 3

External \varnothing D: 41.7 mm

Overhang dimension A: 58 mm

Technical description

Overhang dimension A	58 mm
Through-coolant	yes
Concentricity	≤ 3

External Ø D	41.7 mm
Type of product	Quick change adapter