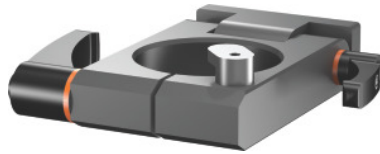


Garant**Tool module for tool fitting fixture can be tilted, for arbor size: 50****Order data**

Order number	358580 50
GTIN	4062406340308
Item class	31P

Description**Version:**

With securing against the arbor falling out.
Locking of the tool arbors with quick-action clamping.

Suitable for:

Base rail No. 358565.

Suitable for:

SK 30; BT 30; HSK 50; PSC 50; VDI 50

Technical description

Length	130 mm
Width	80 mm
can be tilted	yes
Type of product	Toolholder