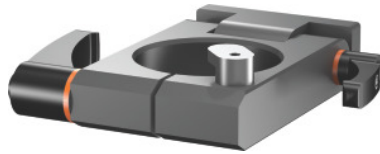


Garant**Tool module for tool fitting fixture can be tilted, for arbor size: 100**

Order data

Order number	358580 100
GTIN	4062406340339
Item class	31P

Description

Version:

With securing against the arbor falling out.
Locking of the tool arbors with quick-action clamping.

Suitable for:

Base rail No. 358565.

Suitable for:

SK 50; BT 50; HSK 100

Technical description

Width	120 mm
Length	145 mm
can be tilted	yes
Type of product	Toolholder