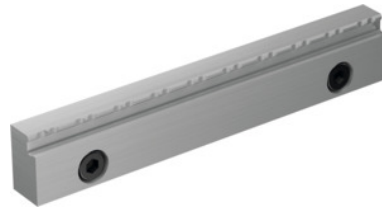


**Garant**
**Gripp front jaw, for jaw width: 160Lmm**

**Order data**

|              |               |
|--------------|---------------|
| Order number | 362390 160L   |
| GTIN         | 4062406370626 |
| Item class   | 31S           |

**Description**
**Version:**

High precision when clamping. The additional jaws greatly extend the application range of your vice. Optimised tooth profile for high retention forces.

**Note:**

Pre-impression of the serrated contour necessary (LANG system).

**Technical description**

|                          |             |
|--------------------------|-------------|
| Jaw height h             | 25 mm       |
| Jaw width b              | 12 mm       |
| for jaw width            | 160 mm      |
| suitable for colour code | Titan 2     |
| suitable for colour code | TC          |
| suitable for colour code | LC          |
| suitable for colour code | HD-HOLEX    |
| suitable for colour code | NC8         |
| suitable for colour code | HiPo        |
| suitable for colour code | HD-Allmatic |

Type of product

Vice jaws