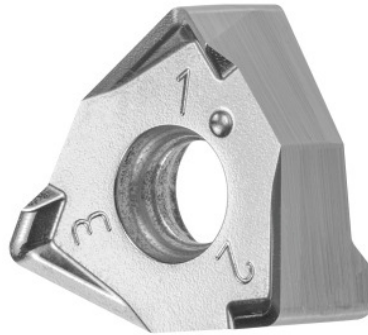


Garant
XNEX 080608, HU7710, Type: ALU


Order data

Order number	215184 ALU
GTIN	4062406392239
Item class	21A

Description

Version:

Double-sided 2x3-edge carbide indexable insert for **shoulder milling operations**.
6 edges ensure good value for money, due to a low price per cutting edge.

Note:

Standard application values for $a_e = 0.3 \times D$ / $a_p = 3$ mm.

maximum cutting depth $a_{p,max}$: 4 mm

Feed f_z per tooth: 0.15 mm

Insert thickness S: 6.35 mm

Technical description

Type	ALU
Feed f_z per tooth	0.15 mm
Corner radius	0,8 mm
Insert thickness S	6.35 mm
ISO code indexable insert	XNEX 080608
Grade	HU7710

Tool material	Carbide
maximum cutting depth $a_{p\max}$	4 mm
Number of changes/inserts	6
Type of product	Indexable insert for milling

User data

	Suitability	V_c	ISO code
Alu plastics	suitable	1320 m/min	N
Aluminium (short chipping)	suitable	1320 m/min	N
Alu > 10% Si	suitable	1100 m/min	N
wet maximum	suitable		
dry	suitable		