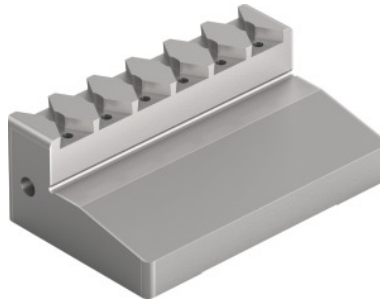


Garant**Top jaw with insert seat, for type: 80****Order data**

Order number	363036 80
GTIN	4062406393021
Item class	310

Description**Version:**

Jaws for using Gripp inserts 361163 and without clamping step (individual adjustment of the step height using parallels, Gripp inserts must be ordered separately).

Technical description

b_1	80 mm
Jaw length l	50 mm
Weight	0.45 kg
Jaw height h	28 mm
Length l_1	3 mm
Height h_2	10 mm
suitable for colour code	Xtric 80
Type of product	Vice jaws

