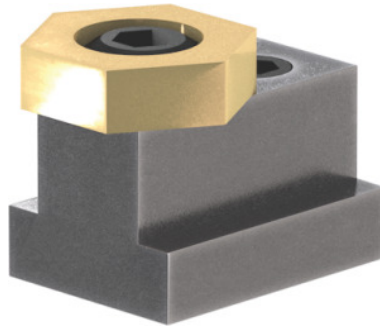




Eccentric clamp, T-slot nominal size: 14mm



Order data

Order number	370009 14
GTIN	4046368509287
Item class	37M

Description

Version:

- **Small footprint, so few interference contours.**
- **For clamping workpieces of any shape.**
- **Hexagon brass washer with eccentric steel screw.**
- **Attachment in the T-slot using a locking clamping screw.**

Application:

Particularly suitable for clamping flat components.

Supplied with:

1 pc. steel screw, 1 pc. clamping washer.

Technical description

Internal hexagon AF ₁	7 mm
Clamping force	9 kN
Washer height H	6.4 mm
maximum tightening torque	28 Nm
Hexagon washer AF	21 mm
Thread M	M10

Eccentric travel S_1	1.6 mm
AF_2	5 mm
Length L	30.5 mm
maximum tightening torque, locking screw	35 Nm
Type of product	Eccentric clamp