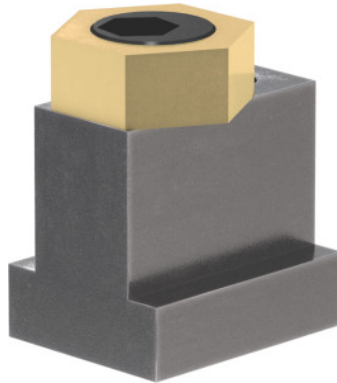




## Eccentric clamp, T-slot nominal size: 22mm



### Order data

|              |               |
|--------------|---------------|
| Order number | 370009 22     |
| GTIN         | 4046368509362 |
| Item class   | 37M           |

### Description

#### Version:

- Small footprint, so few interference contours.
- For clamping workpieces of any shape.
- Hexagon brass washer with eccentric steel screw.
- Attachment in the T-slot using a locking clamping screw.

#### Application:

Particularly suitable for clamping flat components.

#### Supplied with:

1 pc. steel screw, 1 pc. clamping washer.

### Technical description

|                           |         |
|---------------------------|---------|
| Eccentric travel $S_1$    | 2.5 mm  |
| Hexagon washer AF         | 30 mm   |
| Thread M                  | M16     |
| Washer height H           | 12.7 mm |
| maximum tightening torque | 135 Nm  |

|  |                 |
|--|-----------------|
| Clamping force                           | 27 kN           |
| Internal hexagon AF <sub>1</sub>         | 12 mm           |
| Length L                                 | 44.3 mm         |
| AF <sub>2</sub>                          | 6 mm            |
| maximum tightening torque, locking screw | 55 Nm           |
| Type of product                          | Eccentric clamp |