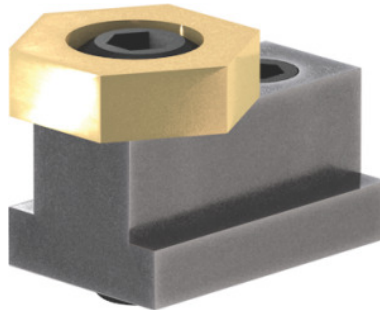




## Eccentric clamp, T-slot nominal size: 12mm



### Order data

Order number	370009 12
GTIN	4046368509263
Item class	37M

### Description

#### Version:

- **Small footprint, so few interference contours.**
- **For clamping workpieces of any shape.**
- **Hexagon brass washer with eccentric steel screw.**
- **Attachment in the T-slot using a locking clamping screw.**

#### Application:

Particularly suitable for clamping flat components.

#### Supplied with:

1 pc. steel screw, 1 pc. clamping washer.

### Technical description

Washer height H	4.8 mm
Hexagon washer AF	21 mm
Eccentric travel $S_1$	1 mm
Internal hexagon $AF_1$	5 mm
Thread M	M8
maximum tightening torque	11.3 Nm

Clamping force	3.6 kN
AF <sub>2</sub>	4 mm
Length L	27.9 mm
maximum tightening torque, locking screw	17 Nm
Type of product	Eccentric clamp