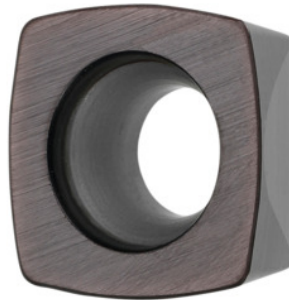


**Garant**
**XDPW 09T308 SR, HB7720, Type: HART**

**Order data**

Order number	212956 HART
GTIN	4045197812636
Item class	21A

**Description**
**Note:**

Standard application values for  $a_e = 0.5 \dots 1 \times D / a_{p \max}$

Feed  $f_z$  per tooth: 0.43 mm

ISO code indexable insert: XDPW 09T308 SR

Type: HART

Corner radius: 0.8 mm

Programming radius at  $a_{p \max}$ : 1.99 mm

**Technical description**

ISO code indexable insert	XDPW 09T308 SR
Programming radius at $a_{p \max}$	1.99 mm
Type	HART
Corner radius	0.8 mm
Grade	HB7720
Tool material	Carbide

maximum cutting depth $a_{p\max}$	1.15 mm
Feed $f_z$ per tooth	0.43 mm
Number of changes/inserts	4
Type of product	Indexable insert for milling

## User data

	<b>Suitability</b>	<b><math>V_c</math></b>	<b>ISO code</b>
Steel < 50 HRC	suitable	100 m/min	H
Steel < 55 HRC	suitable	80 m/min	H
Steel < 60 HRC	suitable	50 m/min	H
wet maximum	suitable only under restricted conditions		
dry	suitable		