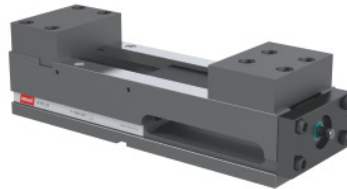




NC high-pressure vice, Type: 160



Order data

Order number	360565 160
GTIN	4062406401481
Item class	32P

Description

Version:

Small size – optimum ratio of clamping range to overall length.

Stepless adjustment – 100% clamping force at 360°.

Particularly rigid body made of GJS-60, **ground on top and bottom faces.**

Pairing accuracy 0.02 mm.

- **Thread on both sides (M8), for securing a workpiece backstop.**
- **Wear-resistant power intensifier**
- **Precise alignment slots.**
- **Side outlet opening for evacuation of chips and coolant.**
- **Low-maintenance high-pressure spindle – constant pressure level due to wear-resistant mechanical power intensifier.**

Feature:

- **Fully enclosed low-maintenance nitrided spindle.**
- **Increased service reliability.**
- **Optimised swarf protection.**
- **Minimised cleaning requirement.**

Application:

For horizontal use. Versatile clamping unit for machining centres.

Supplied with:

Including 2 pcs. unstepped jaws and 1 pc. hand crank.

Optional extras:

Stepless adjustable clamps No. 360579.

Alignment and fixing set No. 360530.

Popular makes of jaws such as No. 361400– 361660, No. 361295– 361298.

Workpiece backstop and crank No. 360555 and 360800.
Jaws quick-change system No. 361293 125 and 361294 125.

Note:

Alignment dimensions not compatible with those of other manufacturers.

Technical description

Series	HOLEX NC
Clamping range d	72 - 317 mm
Base body length a	530 mm
Weight	67 kg
maximum clamping range	317 mm
Overall length L	573 mm
Base body height c -0.02	110 mm
Base body width B	164 mm
Clamping range b	0 - 245 mm
r	174 mm
g	21 mm
Type	160
t	70 mm
Number of threads for workpiece back-stop	2
Cross-slot n H7	20 mm
Colour code for suitable accessories	HOLEX NC
Longitudinal slot l H8	20 mm
Clamping force up to maximum	60 kN
Width across flats AF	14 mm
Overall height F	159.8 mm
Type of product	Machine vice