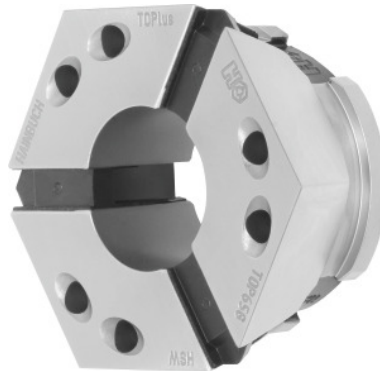




## Clamping head soft, Top 52, Initial bore $\varnothing$ : 30mm



### Order data

Order number	329969 30
GTIN	2050002052932
Item class	33H

### Description

#### Version:

Clamping heads, **round profile, in 0.5 mm increments. Please specify required clamping  $\varnothing$  with order.**

Soft (reduced hardness of 40 HRC in the bore) for boring out.

#### Advantage:

- **25% greater clamping force than clamping head RD.**
- **No radial movement between clamping head and clamping element mounting, therefore immune to dirt.**
- **Unique stiffness due to large seating area of the clamping segments.**

#### Application:

Versatile application range: machining centres, measuring machines, and pallet clamping.

#### Recommendation:

**Clamping heads for special profiles to your individual requirements on request.**

#### Note:

Other taper sizes and shapes (e.g. square) and machinable blanks **on request!**

### Technical description

Adapter	Top 52
---------	--------

Type of product

Clamping head