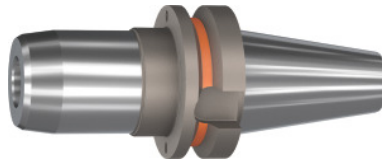


**Garant**

**BASIC hydraulic chuck short, slim, Form ADB, BT 40, Clamping range  $\varnothing$  D1: 10mm**


**Order data**

Order number	303473 10
GTIN	4062406531072
Item class	31A

**Description**
**Version:**

- Radial run-out  $\leq 3 \mu\text{m}$ .
- With RFID/Balluffchip bore.
- Axial length adjustment possible (adjustment range  $V = 10 \text{ mm}$ ).
- Flexibility thanks to the use of reducing adapters.
- Coolant pressure up to 80 bar.

**Application:**

For drilling, reaming and finish milling.

**Delivery conditions:**

Incl. length adjustment screw and hexagon key with T-handle.

**Optional extras:**

Pull studs (PS) No. 308760 – 308802, reducing sleeves No. 302135 – 302187.

**Technical description**

Overhang dimension A	90 mm
$\varnothing D_2$	30 mm
Overhang length $L_1$ incl. recess	63 mm
Thread M	M8×1
$L_2$	44.5 mm
External $\varnothing D$	44.5 mm

Clamping $\varnothing D_1$	10 mm
Adapter	BT 40
Arbor standard	JIS B6339
Arbor standard	JIS B6339
Shape	ADB
Through-coolant	yes, with max. 80 bar
Balance quality G at rotational speed	G 2.5 at 25,000 rpm
Concentricity	$\leq 3 \mu\text{m}$
Machining strategy	HPC
Balluffchip bore	yes
Type of product	Hydraulic clamping chuck