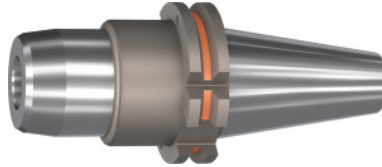


## Garant

### Hydraulic chuck BASIC short, slim, Form ADB, SK 40, Clamping range $\varnothing$ D1: 32mm



#### Order data

Order number	302043 32
GTIN	4062406544379
Item class	31A

#### Description

##### Version:

- Radial run-out  $\leq 3 \mu\text{m}$ .
- With RFID / Balluffchip bore.
- Axial length adjustment possible, 10 mm adjustment track.
- Flexible due to use of reducing sleeves.
- Coolant pressure up to 80 bar.

##### Application:

For drilling, reaming and finish milling.

##### Optional extras:

Back stop screws for direct clamping / use of reducing sleeves on request.

Pull studs (PS) No. 308600 – 308806, PS wrenches No. 308810 – 308830, size 12; 20; 32: Reducing adapter No. 302135 – 302187.

#### Technical description

Overhang dimension A	80.5 mm
Clamping $\varnothing$ D <sub>1</sub>	32 mm
L <sub>2</sub>	25.5 mm
Thread M	M16×1
Adjustment travel V	10 mm

External Ø D	73 mm
Ø D <sub>2</sub>	63 mm
Reach L <sub>1</sub>	61.5 mm
Adapter	SK 40
Arbor standard	ISO 7388-1
Shape	ADB
Through-coolant	yes, with max. 80 bar
Balance quality G at rotational speed	G 2.5 at 25,000 rpm
Concentricity	≤ 3 µm
Machining strategy	HSC
Type of product	Hydraulic clamping chuck