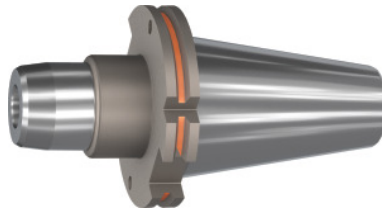


**Garant**
**Hydraulic chuck BASIC short, slim, Form ADB, SK 50, Clamping range  $\varnothing$  D1: 12mm**

**Order data**

Order number	302053 12
GTIN	4062406544386
Item class	31A

**Description**
**Version:**

- Radial run-out  $\leq 3 \mu\text{m}$ .
- With RFID / Balluffchip bore.
- Axial length adjustment possible, 10 mm adjustment track.
- Flexible due to use of reducing sleeves.
- Coolant pressure up to 80 bar.

**Application:**

For drilling, reaming and finish milling.

**Optional extras:**

Back stop screws for direct clamping / use of reducing sleeves on request.

Pull studs (PS) No. 308600 – 308806, PS wrenches No. 308810 – 308830, size 12; 20; 32: Reducing adapter No. 302135 – 302187.

**Technical description**

External $\varnothing$ D	49.5 mm
Clamping $\varnothing$ D <sub>1</sub>	12 mm
suitable reducing adapter	302140; 302135
$\varnothing$ D <sub>2</sub>	32 mm
Adjustment travel V	10 mm

Overhang dimension A	80.5 mm
Reach L <sub>1</sub>	61.5 mm
L <sub>2</sub>	31.5 mm
Thread M	M10×1
Adapter	SK 50
Arbor standard	ISO 7388-1
Shape	ADB
Through-coolant	yes, with max. 80 bar
Balance quality G at rotational speed	G 2.5 at 25,000 rpm
Concentricity	≤ 3 μm
Machining strategy	HSC
Type of product	Hydraulic clamping chuck