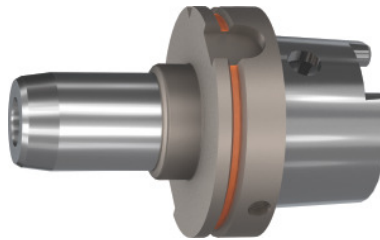


**Garant**
**Hydraulic chuck BASIC short, slim, HSK-A 100, Clamping range  $\varnothing$  D1: 12mm**

**Order data**

Order number	307523 12
GTIN	4062406544508
Item class	31A

**Description**
**Version:**

- Axial length adjustment, adjustment travel 10 mm.
- With RFID/Balluffchip bore.

**Application:**

- High metal removal rate (but not for extreme heavy machining).
- For drilling, reaming, and milling.

**Optional extras:**

Reducing sleeves No. 302135 – 302187, coolant tube No. 309880, socket wrench No. 309890, parallel wipers No. 343720.

**Note:**

A-dimension = 200 mm available on request!

**Technical description**

Clamping $\varnothing$ D <sub>1</sub>	12 mm
Overhang dimension A	95 mm
$\varnothing$ D <sub>2</sub>	32 mm
L <sub>2</sub>	47 mm
Adjustment travel V	10 mm
L <sub>3</sub>	40 mm

External Ø D	50 mm
suitable reducing adapter	302135; 302140; 302145; 302147
Thread M	M10×1
Adapter	HSK-A 100
Arbor standard	ISO 12164-1
Arbor standard	DIN 69882-7
Arbor standard	DIN 69893
Shape	A
Through-coolant	yes, with max. 80 bar
Balance quality G at rotational speed	G 2.5 at 25,000 rpm
Concentricity	≤ 3 µm
Machining strategy	HSC
Balluffchip bore	yes
Type of product	Hydraulic clamping chuck

## Accessories

Slotted reducing adaptersealed Clamping range Ø D1 5 mm	302140 5
Slotted reducing adaptersealed Clamping range Ø D1 6 mm	302140 6
Slotted reducing adapterwith cooling Clamping range Ø D1 6 mm	302135 6
Slotted reducing adaptersealed Clamping range Ø D1 8 mm	302140 8
Cylindrical cleanerPlastic Pin Ø 12 mm	343720 12
Slotted reducing adapterwith cooling Clamping range Ø D1 8 mm	302135 8
Slotted reducing adaptersealed Clamping range Ø D1 3 mm	302140 3
	302140 4

Slotted reducing adaptersealed Clamping range  $\varnothing$  D1 4 mm

Slotted reducing adapterwith cooling Clamping range  $\varnothing$  D1 5 mm

302135 5

Slotted reducing adapterwith cooling Clamping range  $\varnothing$  D1 3 mm

302135 3

Slotted reducing adapterwith cooling Clamping range  $\varnothing$  D1 4 mm

302135 4