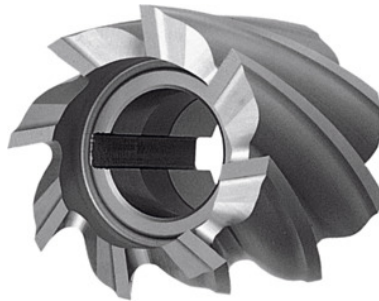


Garant
Shell end mill N, uncoated, \varnothing ×width js16: 40X40mm

Order data

Order number	181000 40X40
GTIN	4045197096258
Item class	11U

Description
Version:

The end mills cut on the front face and on the circumference.

Application:

Type N = standard toothing, 30° helix.

Note:

Sizes 30×30, 35×35, 40×20, 50×25, 60×60 can only be mounted using a bore keyway.
 f_z for $a_e = 0.5 - 1 \times D$.

Technical description

Cutting edge $\varnothing D_c$	40 mm
Bore $\varnothing H7$	16 mm
No. of teeth Z	6
Feed f_z for side milling in steel < 750 N/mm ²	0.07 mm
Shank type	with bore
Overall height	40 mm
Coating	uncoated

Tool material	HSS Co 5
Standard	DIN 841
Type	N
Tolerance nominal \varnothing	js16
Shell end mill arbor	With drive keyway
Helix angle	30 degrees
Direction of infeed	horizontal and oblique
Through-coolant	no
Corner chamfer angle	90 degrees
Colour ring	without
Type of product	Cylindrical milling cutter

User data

	Suitability	V_c	ISO code
Steel < 500 N/mm ²	suitable	30 m/min	P
Steel < 750 N/mm ²	suitable	28 m/min	P
Steel < 900 N/mm ²	Suitable	25 m/min	P
INOX < 900 N/mm ²	suitable	20 m/min	M
INOX > 900 N/mm ²	suitable	18 m/min	M
CuZn	Suitable	45 m/min	N
Uni	suitable only under restricted conditions		
wet maximum	suitable		